



OPUNAKE & COASTAL NEWS

Vol. 22 No. 24 December 13, 2012
www.opunakecoastalnews.co.nz

Published every
Thursday Fortnight

Phone and Fax 761-7016
A/H 761-8206
for Advertising and Editorial
ISSN 1171-0624

Inside...

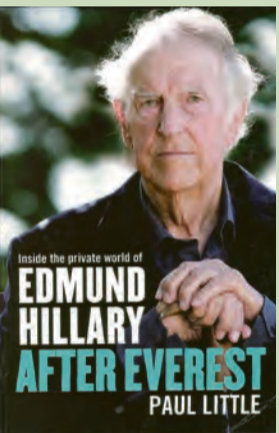
Making the better best and the best better



Deputy principal farewelled after 37 years service, page 5.



Entertaining Christmas parade at Okato. See page 13



A behind the scenes view of Sir Ed. Turn to page 7.



Homegrown comedy hits the mark. Page 3.



Jack Cruden (right) was named as Dux (Crossman Cup), while Jared Woolridge was Proxime Accessit (Runner up). They also won various other awards which you can see.

Jack Cruden was awarded the Crossman Cup as Dux and Jared Woolridge named the Proxime Accessit as runner up to the dux at the Senior Prizegiving ceremony at Coastal Taranaki School (CTS) on Friday December 7. "It's great - it's going to help me in the future", Jack said. He added that it was a surprise. Looking at Jared and smiling he continued, "I had

tough competition". "I bet money on Jack winning", commented Jared. Next year Jack heads to Victoria University to study computer science and design, while Jared goes in the opposite direction to Waikato University. He plans to become a secondary teacher. English and history will be the majors in his degree.

After a welcome by Margaret Normanton (deputy principal), Chris Luke led the Karakia. Waiata was an appealing feature of the ceremony throughout.

Board of Trustees chairperson Aaron Pollard gave a speech. After mentioning several positive aspects such as, "art work which has lifted the school's vis-



Guest speaker Nathan Smith, NZ Paralympic cyclist, presents an award to Jamie Linn for Year 11-13 Champion Girl in Athletics.

ta", he dwelt on the sad death of Tracey Dando "A founding member of the Board of Trustees".

Three of the head students gave a speech, starting with Laine Davies, who said it was "a great privilege to be a head student". He plans to enter the NZ Navy with a focus on electronics. Quoting Nelson Mandela he said, "Education is the most powerful weapon that can change the world".

"I gained a lot as a leader and as a person", he said.

After the presentation of Class and Subject awards, the guest speaker Nathan Smith, a NZ Paralympic cyclist spoke. He is the brother of outstanding All Black Conrad Smith. He explained he lost his leg while in Oxford, England. He admitted he'd had too much to drink and was on the wrong side of the road when hit by a speeding motorist.

"Sport was a priority throughout my childhood" he said. Later he headed to Otago University to study medicine, but admitted he didn't study very hard. Returning to Taranaki he played briefly for the Taranaki rugby team, but previous sports injuries to his left leg continued to be an issue.

After he made the NZ Paralympic team he entered the 3k cycling pursuit and tried hard for a medal, but finished sixth or seventh - a huge disappointment and below his world ranking. "I was happy in that I'd given everything", he commented.

He concluded his speech by urging the students to "find the balance in your life" - something his brother Conrad told him.

Nathan presented the sporting awards after his speech. These included the Sports Co-ordinator Award for the Best Sporting Moment, which went to Maddy Mitchell. The Sportsmanship Cup for the Overall Contribution to Sport was won by Crystal Baker. Hamish Kape

won the CTS Sports Academy award as the Best All Round Athlete. Hamish also won the Callum Taylor Trophy for Most Outstanding Sportsman/Team.

Allan Miles gave the Principal's Address next and in a comprehensive speech outlined the school's many achievements, including the positive ERO Report, which was conducted in October. "Make the better best and the best better" was one piece of advice from the ERO team.

He thanked many people for their contribution including Jonathan Young MP, as well as "A great team of teachers and support staff". He praised the paperwork side of the school, including notably the prospectus "an exceptional summary of our special character".

Near the end of his speech he acknowledged the contribution of staff who were leaving.

He had a special tribute for Mark Dando. "Your contribution to our students has been profound Mark". And "We continue to grieve with you for your wonderful wife and best mate, Tracy".

Mr Miles concluded, "Farewell to all students who are moving on to the big, wide world beyond Okato. We hope you will look back on your time at CTS with pride and fondness, as we will of you. Remember you are tangata whenua - you are forever part of Coastal Taranaki School and always welcome".

NEW COASTAL MACHINERY SALES REPRESENTATIVE

John Judge
Phone **0275387 387**

06 7575582
FOR ALL YOUR MACHINERY ENQUIRIES

NORWOOD 146 GILL ST,
FARM MACHINERY CENTRE NEW PLYMOUTH PH (06) 757 5582

Computers • Laptops • Parts • Accessories • Software



Computer Sales, repairs, Service, Virus Removal & Upgrades

Ph: Today on 06 2783020 or 0274 219 113
Open Monday to Friday from 8.30am to 5pm
Saturday 9am to 1pm
Or Email: fixit@matts.co.nz | www.matts.co.nz
57 Victoria Street, Hawera

4Square45
All you need

We've got all you need for a great Christmas

- Christmas Hams & Baby Potatoes
- Merry Christmas from 4Squares
- Strawberries & Cream, Bubbles & Beer
- Chocolate, pavlovas, christmas mince pies
- Gift Baskets

We welcome RD1 and Farmlands Cards

Big enough to be competitive, small enough to care

Open every day 7:30 - 9pm

77 Tasman St, Opunake Ph: 06 761 8668

EDITORIAL: Fluoridation bombshell

Despite almost 70% (345) of submissions against the addition of fluoride to the water supplies of Patea and Waverley, the South Taranaki District Council voted to add the substance. The Council voted 10-3 in favour; the dissenting councillors were Gordon Lawson, Bonita Bigham and Michael Self.

It seems extra-ordinary the majority view of residents was cast aside in favour of the minority in what is, after all, mass medication. We

know what is best for you. Where is the democracy in this decision?

The move is against the worldwide trend of taking fluoride out of the water supplies because the scientific evidence is not in favour. It is a pity that books such as 'The Case Against Fluoride' by Dr Paul Connett et al was not read by people who voted for - or were supportive of - this unfortunate decision. This book was reviewed in the Opunake and Coastal News in our November 15 issue (Page 23).

In 2006 the NRC (National

Research Council) in the USA set up an investigative body of scientists and professionals, with people of pro, anti and neutral persuasion (in equal numbers). The chairperson Dr John Doull finally concluded after many studies were analysed: "What the committee found is that we've gone with the status quo regarding fluoride for too long really - and now we need to take a fresh look ... and when we looked at the studies that have been done, we found that many of these (health) questions are unsettled and we have less

information than we should, considering how long this (fluoridation) has been going on (page 273).

The scientific evidence does not support the safety of fluoride. It is most effective used topically as in toothpaste (virtually all brands have fluoride), but put in the water supply there are real health issues, especially for certain vulnerable groups, such as those with arthritis, kidney disease, babies fed formula and those with thyroid problems - to mention just a few of a long list.

Rolland McKellar

Send your your views to
'Letters to the Editor'
23 Napier Street, Opunake.
Fax: (06) 761 7016
email: editorial@opunakecoastalnews.co.nz
You are welcome to use a pseudonym but must supply your name and address.

At last an Architect designed home on your site for \$550K*
Total cost Move in!



Why settle for brick & tile?

Saunders Architects Tel 06 759 7430

*Other Packages from \$350,000

Attend to all those pesky jobs before Christmas

SINCLAIR ELECTRICAL & REFRIGERATION

Opunake 761 8084 Kaponga 764 6084
Okato 752 408 Manaia 274 8084



Letters to the editor

Devastated farmers appreciate support

We are distraught after the sudden death of 120 cows on our farm in South Taranaki. Within 30 minutes of water troughs being topped up using a portable tank, a few cows began falling to the ground. We immediately

rang vets to help and were overwhelmed with support with 20 vets coming in to help but there was little they could do as some of the cows died quickly. For everyone involved it was heart breaking.

The dead cows represented about a quarter of the herd and we are now working with MPI to investigate the cause and the attention is focussed on the portable tank.

We would like to thank

South Taranaki Vets for their prompt response and also thank to Fonterra, Federated Farmers, Rural Support & DairyNZ in what is a very distressing time.

John Murphy

BBC (Bible Believers' Corner) Tradition

Jesus warned His disciples about the leaven of the Pharisees. What was this leaven?

All Jews had the Tanakh, the Old Testament as their Scripture, but the Pharisees had something else as well. They believed that God gave Moses an oral interpretation of the written laws plus some extra laws too. Only the priests knew these laws and their interpretations. These were handed down orally from generation to generation until after the destruction of the second temple. About 200 BC, these spoken laws and interpretations were written down and since then various rabbi's teachings were added.

This is 'Tradition', as sung in 'Fiddler on the Roof'. The official name is the Talmud. It was held by Pharisees of old and by many Jews today, as being equal to the Old Testament (Tanakh) and is believed to be its only true interpretation.

This is what made Jesus teaching so different. He didn't refer to the Talmud; He only quoted from the Tanakh. He didn't quote that rabbi, this school of doctrine nor use loads of references to back up His teachings. He just stated God's word. And the average person knew they were hearing truth. Jesus also told people to observe all that the Pharisees say as they sit on Moses' seat. Was He contradicting Himself?

No, he was pointing out that when they quoted Moses from the Bible they were to be obeyed but reject them when they quoted from the Talmud.

Their traditions, their doctrine, their reliance on past rabbinical teachings blinded them to the truth. They searched the scriptures for eternal life, but when eternal life stood before them in the shape of Jesus Christ they rejected Him.

I wonder about us today - and I include myself in this. Have we prated about our doctrine and about our beliefs instead of projecting Christ?

Have we concentrated on our own traditions and not on Jesus who, having lived, died and risen, is alive and wants to become known to all?

The whole purpose of the church is to bring people into a personal relationship with Jesus Christ and have His eternal Spirit live in them. Don't let our traditions stop Christ again.

Refs: Matt 7v28-29, 15v1-9, 16v6-12, 23v1-4, John 5 v39-40

*Richard Oliver
Pastor Eltham Message
Church
www.messagechurch.com*



MEETINGS:

Sundays at 38 Tayler Street, Eltham at 10.30am.

Phone 06 764 7358 for other Bible Studies.

Eltham Message Church

Pastor Richard Oliver

We are an independent Bible Believing Church
All are most welcome
www.messgechurch.com

OPUNAKE & COASTAL NEWS

Registered office: 23 Napier Street, Opunake
PO Box 74, Opunake

Telephone and Fax: (06) 761-7016 a/h ph: (06) 761-8206

e-mail: Advertising ads@opunakecoastalnews.co.nz
Editorial editorial@opunakecoastalnews.co.nz
Accounts accounts@opunakecoastalnews.co.nz

website: www.opunakecoastalnews.co.nz

Editor Bernice M'Kellar -

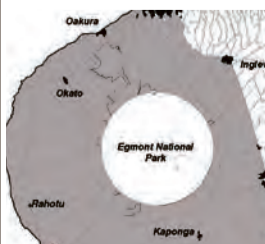
Journalists Rolland M'Kellar

Kathryn Stanley

Delivery: Thursday, fortnightly

Registered as a newspaper.

Member of the Community Newspapers Association of NZ



The Opunake and Coastal News is distributed free to every home and business within the rural area bounded in the north by the New Plymouth city border, extending east to Egmont Village, and around to the edge of Stratford, south to the Hawera city border and inland to Kaponga and

Garage Doors Specialists



WINDOWS • DOORS • CONSERVATORIES

- Sectional, Roller, Tilt.
- Automatic Openers
- Repairs & Maintenance

Call for a Free Measure & Quote

Ph 06 7588073



Unification Church of New Zealand

Family Federation for World Peace & Unification

10.30am Sunday Service

Peter & Vivi Holdem, 2 Tayler Street, Eltham



"God lost His lineage, and with that, God lost the basis of human brotherhood". - Rev Sun Myung Moon



best dog costume ever

Do you have a bee in your bonnet about a current local issue? Share it with us in an email to the editor: editorial@opunakecoastalnews.co.nz or fax (06) 761 7016

Playwright captures essence of farming life

Opunake's home grown comedy Farm Supplies and Other Lies went down a treat with the audience who clearly enjoyed seeing themselves portrayed - or perhaps parodied - so aptly.

Written and directed by Lynelle Kuriger, a busy mother and farmer who lives near Opunake, the comedy with some 80's music thrown in also had some poignant moments.

Set in a small rural Taranaki farming community with much of the action taking place in Barry's Farm Supplies store, the plot centres on Anna (Chloe Danz), a single female dairy farmer in her 30's whose been running her elderly parent's farm. Threats that the farm will be sold create much of the dramatic tension along with the fledgling relationship between the shy rural supplies store owner Barry (Andy Whitehead) and the unsophisticated Anna whose natural reticence is highlighted by the loud and brash Polly (Stephanie MacKenzie), her best friend.

Polly's philandering social climbing real estate agent boyfriend Warren (played with his usual flair by Ian Hitch) also provides comic moments when he is caught with the barmaid Belinda (Honey-Rose Hutchins), home from university, who seems intent on ruining



Warren incurring Polly's wrath while Belinda (left) looks on.

others relationships. Belinda's father Neil played by Mike Smith completes the cast.

An underlying feminist theme pushed by the strident Polly with barbed comments as the one directed to Neil: "Women will never be equal until we can walk down the street with a beergut like yours and think you're sexy" and her incessant attempts to get Anna to stand up herself, also run parallel to the action.

It was clear that much of the audience could relate to the main protagonists with a lot of the humour and suggestive innuendo not wasted on the audience. There were some great belly laughs.

Most touching though

was Barry's awkward attempts to woo Anna, his hesitancy convincingly and endearingly played by Andy Whitehead.

Simon Hitch's comical social climbing Warren I also enjoyed - just his appearance with his mutton chop sideburns and peculiar hair style alone - inviting mirth.

The seductive barmaid and good time girl, a picture of amorality, was also well played and well drawn.

The three songs were a nice addition. I loved the third number (not the first which reminded me of some supermarket advert) though I think the backing - also very good and effective - slightly drowned out the voices and could have been

quieter. Anna's pure voice blended well with the more mature Polly's making for a lovely duet.

The interplay between the cuckolded girlfriend and Anna as they scornfully jostle the errant Warren was clever and entertaining.

All is well as ends well and the family farm is saved by the deceptively astute Barry who gets not only the farm but also wins Anna.

Lynelle said later she wanted to write something that showed farmers weren't stupid. Chauvinist maybe, but not stupid.

She absolutely captured and distilled the essence of farming life. And how everyone enjoyed it.

Bernice McKellar

Red Cross talks to locals about transport

The possibility of Red Cross providing local folk with a van for transport to medical appointments and vocational requirements

was discussed at a gathering of interested groups at the Sandfords Event Centre in Opunake.

As Area Manager for Red

Cross, Karen Lawson addressed the meeting including members of the public, Coastal Care representatives and staff from the Taranaki District Health Board.

"Red Cross staff are interested in vulnerable people in Coastal Taranaki", she said.

This investigation into a possible transport service for the coast is being conducted by the New Zealand Red Cross and the Taranaki District Health Board. It will be a free service and already

surveys have been made widely available in the community so people can make their needs known.

A final decision on the transport service will be made after the survey is completed. The small van could be in use by April 2013 if it is required. There is no intention of doubling up on existing volunteer transport facilities. Contract New Zealand Red Cross on 0800 733 276 or emailto newplymouth@red-cross.org.nz



Enjoying a day at the beach

Albert Einstein:

"I fear the day when the technology overlaps with our humanity. The world will only have a generation of idiots."

Gillbanks
Fish Shop
61 Tasman St
06 761 8478



Don, Judy and staff wish everyone a blessed Christmas and a rewarding New Year

Closed Christmas and Boxing Day.
Open statutory days
and weekdays 5pm to 8pm

Clegg's Funeral Services & Monumentalists

'Serving all districts'

Mike Clegg MOB: 027 496 9090
Susan Clegg MOB: 027 441 7039
Andrew Blanche MOB: 027 496 9045

Office - 24 hrs (06) 278 8088

THE CHASERS CRAFT
CUSTOM ENGRAVING
174 DEVON ST EAST. N.P.
PH/FAX 06 - 758 7979

Personalise that gift

PRESENT THIS AD BEFORE CHRISTMAS AND GET THE GST OFF ANY ENGRAVING

kitchens
from humble to stunning

one off
gallery & factory

168 waihi road
hawera 4610
p - 06 278 4280
e - paul@oneoff.co.nz

design ~ manufacture ~ installation

designs by paul rogers CKDNZ
your only fully certified kitchen designer
in south taranaki **NKBA**

21 years making your dreams a reality

furniture
new or restored

For advertising phone
(06) 761 7016

TRANSPACIFIC
INDUSTRIAL SOLUTIONS

Septic Tank Cleaning
Water Deliveries
Waste Disposal
Drain Flushing
Waterblasting

New Plymouth 06 755 9150
Hawera 06 272 8725

Coastal Podiatry

Karyn Lehrke registered Podiatrist is available for all general footcare

- Corns
- Callus
- Hard Cracked Heels

TOENAILS

- Ingrown Toenails
- Thickened Nails
- Fungal Infections

Orthotics, Painful Feet, Heel Pain
ACC Registered, Footwear Advice,
Diabetic Foot checks, Home Visits Available

Karyn Lehrke (NZ Dip Pod)

11 Dixon Street, Oakura • 35 Morley Street, New Plymouth
Ph: 06 752 1019 Mob: 027 335 5827 BY APPOINTMENT ONLY

Councillor Michael Self's comment



Cr Michael Self

The last few months have been an interesting and intense period of time to be a councillor. The question of fluoridating the Patea and Waverly water supplies has been major. For me I have been left with many questions from both sides of the debate. This is in spite of over 800 pages of written submissions and over five hours of oral submissions.

Unifying both sides of the debate is a care for people and their wellbeing. However, the big thing that has hit me is the extent of poverty in our region. The word poverty easily rolled of the

tongues of many submitters. As a former teacher I thought I had a reasonable grasp of the poverty issue in South Taranaki but it is bigger than I have ever thought. This in what is possibly one of the richest areas of the world in terms of both food production capabilities and mineral wealth.

Another issue facing us is family violence HRC in Hawera has been assisting hundreds of families affected by violence they are undergoing major restructuring so that their valuable work can continue. Like many activities within our community that work to help the most vulnerable they have a shortage of finance. Our Taranaki District Health Board is struggling and by the sounds of it will have to resort to cake stalls to maintain hospitals. The fights and pressures resume. Other health organisations are struggling. On these issues our four MPs are very silent some even invisible.

As a council we become faced with dilemmas in regarding what actions to take

in the above matters while at the same time supporting activities that enhance and give pride in our communities. Examples being: Everybody's Theatre and the South Taranaki Museum. The health of a community is a holistic being - perfect physical health may reflect a beige dying mental health or the destruction of a community's soul.

It is easy to identify problems but what to do about them becomes the issue. Limited funds stifle much, volunteers can keep giving but their health and wellbeing is important. Also the volunteer contribution masks what possibly should be Governments' both central and local problems. Does one solution to part of a problem mean that those working in an area pull out without addressing the full problem? This is what I fear may happen with the fluoridation of Patea and Waverly's water The agencies that having been working in those areas with a more holistic approach to the well being of children

may drawback with poverty still reigning. Bit like putting a bandage on a pimple and ignoring the leg full of gangrene.

As we come to the end of 2012 we have many issues being carried over into the new year: the health of our people, of our communities, our environment, or another scale are the approaches of the oil and gas industries coupled with the head in the sand approach to oil and gas by the Taranaki Regional Council going to maintain Taranaki's position as a world class producer of food and lower the health and wellbeing of our people. Christmas based around its beautiful story of hope coming to the world, the summer solstice as the sun starts its journey to the other side of the world is a time to think about the issues facing us and what can we do to make our place, our hearts, and our souls just a little bit better and happier.

As you and yours move into holiday mode enjoy and celebrate God's blessings. Bless you all this Yuletide.

For advertising
phone
(06) 761 7016

New Okato skate park and playground planned



A skate park similar to this could be built on the site of the former Okato School

A new public open space has been confirmed for Okato with the council's purchase of land from the Ministry of Education.

The 0.4ha (4,000m²) block of land comprises a corner

section of the former Okato School, opposite Hempton Hall.

"We took over the site from the Office of Treaty Settlements on Monday (December 3), and so can go ahead

with planning the site's development," says Manager of Parks Mark Bruhn.

"When it was open, the school provided a public green space for the community. By purchasing this part

of the land, we've been able to secure a public reserve in the centre of town for the enjoyment of future generations."

The council plans to install a new playground and a skate park on the site. The Kaitake Community Board is getting feedback from Okato residents on the type of playground they want, after which a design will be drawn up.

Construction of the new playground is budgeted to occur in the second half of next year. Meanwhile the standard of an existing playground on the site is being assessed to see if it can remain in the interim, and two buildings on the site will be removed in the New Year.

Okato School was closed in 2004 and land-banked with the Office of Treaty Settlements for use in future Treaty of Waitangi settlements.

Andersons pies
"pies that turn your world upside down"

CHECK OUT OUR WEBSITE:
www.andersonspies.co.nz

OPENING HOURS
MONDAY - FRIDAY 6AM - 5PM
142 Princes Street Hawera
PH 06 278 5553 • FAX 06 278 5182

Wishing our customers a Happy Christmas and successful New Year

The partners and staff wish you a Merry Christmas and a safe and happy holiday season. We look forward to working with you in the New Year.

Our office will be closed from 4.00pm on Friday 21 December 2012.

We will re-open on Monday 7 January 2013.

We will have a skeleton staff on to assist you if required from Thursday 3 January 2013.



Reeves Middleton Young **RMY**
Lawyers
Private Bag 2031
New Plymouth 4342
New Zealand

Our last issue of the year will be next week - 20 Dec
Phone now for advertising 06 761 7016

“Leaving a huge Dave-shaped hole that no-one else can fill”



From left David Nicholas with sister Barbara Mackay, wife Mary, son Peter, daughter Sally and sister Helen Hogg. Unfortunately daughter Jenny, also a teacher who taught at Opunake High School last year couldn't attend as she is in Norway.

The accolades just kept coming at a farewell for Opunake High School deputy principal David Nicholas who leaves Opunake High School after 37 years.

Former colleagues, past pupils, and friends paid tribute to the popular teacher who in his time at Opunake has made an immense contribution both to the school and the wider community.

David and wife Mary are moving to Whangarei where Mary, also a trained teacher and recently ordained as a Methodist minister, is to take up a post at Whangarei.

The couple came to Opunake in 1976 from Auckland, each to take up teaching posts.

“Our furniture came by train to Opunake,” recalls David. This was when Opunake had a railway station. He was a keen cricketer which David thinks “helped me get the job”.

David has taught for a total of 35 years at Opunake High School. He was appointed Head of the Maths Department in 1979 and has been Deputy Principal since 1991. Mary too has taught at the school for periods.

He was born in Middlemarch in the South Island. After graduating from Auckland University with a maths degree David “drove trucks for a couple of years” before deciding to go to teachers college to train as a secondary teacher. He taught at Mt Albert Grammar for a couple of years before coming to Opunake. Interestingly his father Ian, also a teacher, briefly taught at Opunake District High School - as it was then - during the early part of the war before joining the Air Force.

A keen all round sportsper-

son, David coached the school cricket team and also played in the Men's Western Division team and in two tournaments for the Taranaki Country Week (?) team. He also played for the Taranaki Hockey team.

In 1982 - now with two children - David took two years leave of absence from Opunake High and the family set off for Rarotonga in the Cook Islands.

It was an interesting experience says David and an opportunity to connect with Mary's roots - her father was from Rarotonga. The Cook Islands is very, very small - “just 30 kilometres to drive around” said David. He taught maths and, music at the high school there.

On their return they became involved in the Kohanga Reo Te Namu and Mary was their first chairperson in 1985. She was also the first secretary of the Opunake Primary School Board of Trustees in 1989.

Tramping is another interest

- he's climbed to the top of Mt Taranaki around 30 times he estimates - which lead to his involvement in establishing the school funded outdoor education centre TOPEC. He was one of its founding members.

In 1983 computers were introduced to the school and David added computing to his teaching subjects. In later years he also taught outdoor education as well as physics and bilingual social studies. An accomplished musician who plays piano and organ, David also taught music at the school for five years.

There's been big changes in the school which when he first arrived had a roll was 580. These days it's 320.

Then, students could leave at 15 and many did finding it easy to get jobs.

These days the leaving age is 16 and most stay longer which is “good for the country”, believes David. Kids are staying on longer and are getting qualifications says David adding “It's tougher for kids

out there to get jobs.” Teaching is also more targeted at careers.

Teaching styles have also changed he reflects.

There's “more emphasis on developing a learning relationship with your class.” It used to be more autocratic and “teacher directed”.

Though teaching involves “A lot more planning” with tutoring directed to the different abilities “It makes more sense,” says David. It's more rewarding.

David also sees decided advantages in students being educated in smaller schools.

“In a smaller high school you can have one day classes,” he says referring to whole day classes held every second Friday and is an opportunity for teachers to become expert in interests they are passionate about.

Educated himself in a boys' secondary school - Timaru Boys High - and having also taught in one, he also believes co-educational schools are also “far more sensible”.

He doesn't believe there's a place for private schools in the education system.

Mary was recently appointed to a position at the St Johns Co-operating Parish in Whangarei. David will be pursuing his interest in music and playing the organ - which interestingly originally came from the Christchurch Town Hall - at the church.

On the brink of a new venture David admits to feelings of “sadness” mingled with excitement to be leaving the town he has called home for 37 years.

“I'll miss people at this school”.

Judging by the sentiments expressed at his farewell, a lot of people will be missing him.

He will leave a huge “Dave-shaped hole” said Maria Potter, the principal of Opunake High School, “that no one else can fill”.

David and Mary will not be leaving till late January so there's still a chance to say goodbye.

We wish them every success in their new life.

Now a Minister's wife!

There was much amusement as colleagues regaled those gathered with anecdotes about their departing colleague at the farewell.

Always on the go, there were references to David being fast moving and busy.

Commented Opunake High School principal Marie Potter, David would greet her each morning as he passed by her office with a cherry “hi, how are you but would never stay to find out how I actually am!”

He was a creature of habit she said.

Maria also remarked on David's wide general knowledge and “his retention of trivial facts” adding he was just so knowledgeable about all sorts of subjects.

Former Opunake High School principal Mark Bowden who recalled his first

encounter with David when he “wiped me off the tennis court” noted his “strong egalitarian, liberal philosophy” and that whenever there was a risk of the school straying from that “we would be reminded of this”. He had grown that culture in the school.

Maria remarked that David was “One of the most loyal people I know”.

As David accepted various gifts which included a signed cricket bat and a laptop computer, he commented he had “worked with the most wonderful people”. Stating to laughter that he would now be “a minister's wife”, he went on to thank those present in an entertaining speech which ended on a serious note clearly linked to his success as a teacher: the importance of listening to young adults and of allowing them to work through things themselves.



Eltham Barbers

9.00am to 5.00pm
Monday to Friday
Mens and Ladies
No appointment needed

NOW OPEN SATURDAY'S 9.30-1PM

38 Bridge Street, Eltham
027 282 6322

Merry Christmas and a
Happy New Year to all my customers.





Season's Greetings from John and Tony

Gifts for all occasions

Open 7 days 9.00am - 5.00pm

SURF HIGHWAY 45 OAKURA VILLAGE PH (06) 752-7291



CREATIVE STONE

Our website has over 150 Memorials pictured on the gallery pages to give you plenty of ideas for the Monument you require.

Sea Grey Adults upright Stone & Base
\$1250.00 Inc GST - Conditions Apply

Restoration work available on request
All our memorials come with competitive pricing and friendly personal service

Open 12pm-4pm Tuesday to Thursday 11am-3pm Friday
www.creativestone.co.nz
567 Devon St West
Blagdon Shopping Centre
Ph 06 751 2177




MICHAEL BLOEMEN ENGINEERING

General Engineer - Victoria Street, Kaponga

Season's Greetings



We thank you for your valued support and we're looking forward to 2013

SEE US FOR ALL YOUR

- Harvesting repairs
- Hydraulic hoses
- Bearing Replacements
- Lathework
- Herringbone Cowsheds
- Yards for Rotary Sheds

TALK TO MIKE HE'LL SEE YOU RIGHT!

Ph (06) 764-6008 a/h (06) 764-6819

TO ADVERTISE

PH (06) 761-7016
or email us on
ads@opunakecoastalnews.co.nz

CAPE & KC ENGINEERING

ALL OF YOUR GENERAL ENGINEERING NEEDS

- * Welding * Cow Sheds * Lathe Work
- * Trailers to Suit

Chris Shingleton

P: 06 763 8878 M: 027 660 8612
6358 Main Road Pungarehu

Local school set to transform the environment

Oakura School in New Plymouth has been named as one of four winning schools to receive a \$10,000 Tremendous School Makeover in 2013 - a joint initiative between the Mazda Foundation and Project Crimson Trust.

Oakura School (New Plymouth) and the other three winning schools: Halfway Bush Primary School (Dunedin), Porirua School (Porirua), and Whangamata Area School (Whangamata)

ing to attract native birds and other wildlife. The school hopes to use the space as an outdoor learning environment, focussing on teaching students about native species.

The developed area will include a viewing platform, walking track, camp site, community orchard, insect homes, as well as other features to attract birds and insects. The entire school and wider community will be invited to take part in the makeover, including pre-

be developed and enjoyed by everyone in Oakura," says Lynne Hepworth, Principal of Oakura School.

Andrew Clearwater, Chairman of the Mazda Foundation, says, "We were blown away with the standard of entries this year, from schools right across the country. It was fantastic to see that both students and teachers are enthusiastic about environmental education and learning outdoors."

"We take great pride in being part of the Tremendous School Makeover programme which has been responsible for the development of 19 outdoor transformations since 2004. We are looking forward to visiting another four schools with the Tremendous team next year."

Bridget Abernethy, Executive Director for Project Crimson, said the number of applications received this year showed New Zealand schools have a keen interest in the environment and outdoor education.

"We were delighted to see so many schools applying for Tremendous School Makeovers. The quality of the entries far exceeded our expectations and the judging panel was presented with a difficult task selecting four winners.

"We are very pleased with our chosen schools. All of

them placed an emphasis on teaching students and the wider community about the environment and our ecosystem."

The Tremendous Team will carry out these makeovers in 2013 together with help from the local school communities, parents and pupils.

All Primary and Intermediate Schools can apply. All finalists will receive \$500 for their school and the winning four schools will receive a \$10,000 Tremendous School Makeover. Entries will open again in the New Year.

About Project Crimson Project Crimson is a charitable conservation Trust that aims to protect New Zealand's native Christmas trees - pohutukawa and rata. Since the Trust was formed in 1990, volunteers have successfully established hundreds of thousands of pohutukawa and rata trees around New Zealand. See www.projectcrimson.org.nz

About the Mazda Foundation The Mazda Foundation was established by Mazda New Zealand in 2005 as a public charitable trust to give assistance to a broad cross-section of causes, including the improvement of our natural environment and the advancement of our young people's education. See www.mazda-foundation.org.nz



will be visited in the New Year by the Tremendous team for a native tree planting working bee. Their designated outdoor areas will be transformed into renewed spaces for students and teachers to enjoy.

Oakura School has chosen to enhance an unutilised plot of hillside with native plant-

sent and past pupils, parents and staff; friends of Oakura School; and local community members.

"We are all thrilled to be receiving a Tremendous School Makeover. Oakura community is very environmentally minded so we are very keen to ensure this is a community project that can

Local ladies enjoy Italian flavour

Sixty South Taranaki Federation WI members recently celebrated an International day with an Italian theme at the 'Fat Cow Café' - the menu, of Italian flavour, was thoroughly enjoyed by all.

Nine of the local institutes competed in a card table competition which was done as a table setting for two - there were some good exam-

ples of pizza, plaited bread, confectionary, menu cards, floral arrangements and souvenirs - the overall winners were Riverlea who were presented with the 'Harvie Tray' by President Phyllis Malcolm, second place was Maata and Kaponga was third. Phyllis thanked institutes for their entries, and the judges commented on the

high standard of the entries.

Pat Dudley entertained with piano accordion music

which brought an enjoyable day to a close.



Italian Pizza - a favourite among many

Merry Christmas and a Happy New Year from your friendly staff at Opunake Pharmacy and Manaia Medicines.



Closed 25th and 26th December and 1st and 2nd January
Otherwise business hours as usual.



Manaia Pharmacy 47 Main St, Manaia Ph: 0800-367-232	Opunake Medicines, Health & Beauty Centre 38 Tasman St, Opunake Phone 761-8144
--	---

For advertising phone
(06) 761 7016

Stuff Your Stocking!

With A Huge Selection Of Summer Stock

Merry Christmas from



Opening Hours
Monday - Friday 9:30am - 5:30pm
Saturday 10:00am - 4:00pm
Sunday 11:00am - 4:00pm



Edmund Hillary after Everest – A book review

Inside the Private World of Edmund Hillary after Everest. Written by Paul Little. Published by Allen and Unwin, 2012, Sydney.

This well-written biography completes Sir Edmund's life journey to the end of his life and deals with the period beyond when there were issues concerning his bequeathed belongings. There were the Rolex watches that his widow Lady June attempted to sell off to raise money for the Himalayan Trust, but this was countered by Hillary's surviving offspring Peter and Sarah. Peter and June did not get on well, which partly explains how the impasse arose, as well as a degree of ambiguity in Hillary's will.

Also unpleasant was the standoff between the Auckland Museum's curator and Peter and Sarah with respect to Hillary's belongings which were left to the museum, although again there was some ambiguity in Hillary's will. Both situations were eventually settled, but not without a few ruffled feathers.

The book revisits Hillary's early life with a harsh, yet pacifist father and his experience with some bullying teachers. When asked if he disliked one particular teacher he replied, "No I despise him". Even by the tougher standards of Hillary's childhood some of these teachers could only be described as appalling.

Despite being academically gifted Hillary's foray

into tertiary education ended in failure. Yet, years later, he eventually was awarded honorary university degrees.

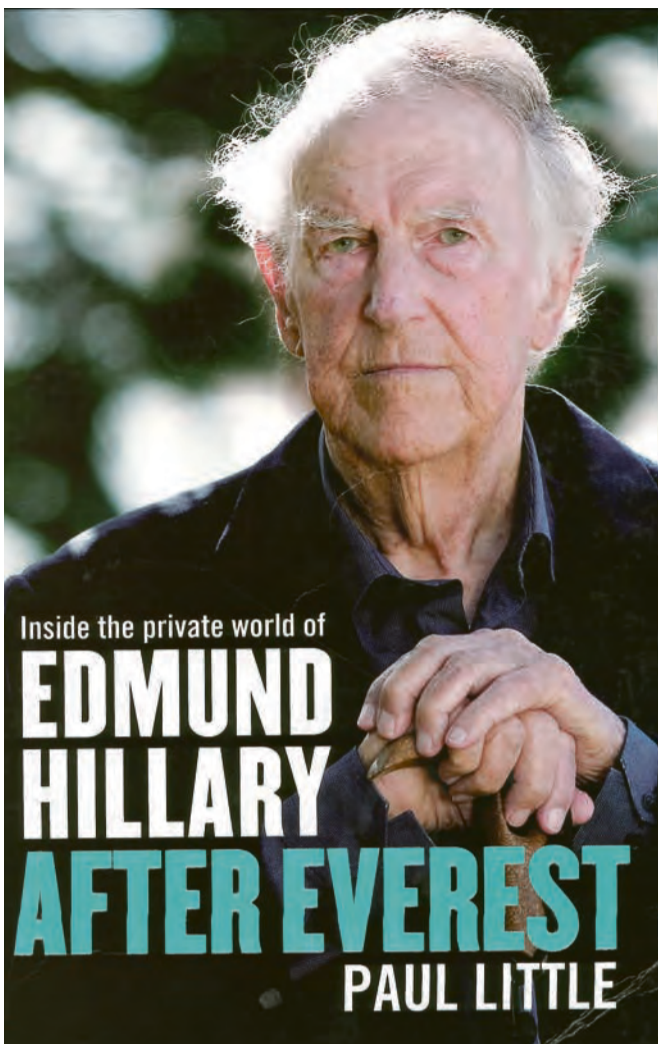
He had many adventures, but his greatest achievement was not the climb to the top of Everest (he said), but his work for the Nepalese people through the Himalayan Trust leading to the building of schools, hospitals airstrips and so on.

One ambition remained unfulfilled; to climb Everest without oxygen. This was mostly because Hillary began to suffer altitude sickness when climbing high, including being carried down unconscious and in danger of dying.

He had his share of misfortunes, notably the 1975 aeroplane crash which killed his first wife Louise and youngest child Belinda. It took years to overcome, probably not helped by his decision to examine the crashed plane with his loved ones still in the wreckage. Over reliance on alcohol and suicidal thoughts followed this tragedy.

His second wife was June Mulgrew who had been married to Peter (although they were legally separated), who died in the Erebus crash. She accompanied Hillary when David Lange appointed him High Commissioner to India.

Hillary's life wasn't without controversy. The best example was his decision to head to the South Pole in-



Edmund Hillary After Everest - a book well worth reading

stead of waiting (part way) for the expedition leader Sir Vivian Fuchs, as requested. Hillary's party became the first overland party to reach the South Pole since Captain Scott in 1912.

This book has several interesting photos, including one of Hillary and Tenzing,

However a few more photographs would have been better.

This is definitely a book well worth reading. As the dust jacket states: This is the story of the man behind the legend.

Rolland McKellar

HARDINGS
 FUNERAL SERVICES LTD
 17 REGENT ST HAWERA
Our professional attention to detail & empathy is our hallmark
PHONE 06 278 8633
 SERVING OUR COMMUNITIES FOR 3 GENERATIONS

Wishing all our clients and friends all the best for Christmas and the New Year. Thanks for your support this year.

cowsheds
 Herringbone Sheds, Rotary Sheds and Rectangle Yards
 Structural & General Engineering

- Pipe Fittings
- NZ Hydraulics Agency
- Agricultural Implement Pins
- Tines, Blades
- Steel Sales
- Pennzoil Oils
- Irrigation Fittings
- Bolts & Nuts

OPEN RIGHT THROUGH EXCEPT FOR STATUTORY HOLIDAYS.

D JENNINGS LTD
 GENERAL ENGINEERS
 Main St, MANAIA Ph (06) 274-8563, Mobile 0274 454 653

BROPHY BUILDERS
 For new homes, roofing, alterations, kitchens, decks and all farm buildings.
 For all your building requirements phone Phil
 6190 South Road, RD 35, Pungarehu
027 236 7129 or (06) 763-8777 a/h

A toast to memory lane - and Leo



Leo Morris (second from left) celebrating his 71st birthday at the Rahotu Tavern last Thursday December 5 with Phil Brophy, Nan Waller and Kevin Billing. Gathered around a table made out of Rata crafted by builder Phil, Leo recalls drinking at the old Rahotu pub when he turned 16. Then he worked in the butcher shop - now demolished but in front of the bakery, the chimney of which still stands - in between the Rahotu Service Station and Rahotu Four Square. Stan Barrett had the butchery.

The drinking age then was 21 and the publican Jack Reeves would allow Leo to have just three or four 5 ounce glasses before pointing to the door. That was the signal for him to go!

We have special rates for frequent advertisers. We call it volume discount. Phone us up or call round if you need more information.

IHAIA MOTORS
 for
A GRADE REPAIRS

- Tyres
- Lubes
- Panel beating
- Farm Bikes
- All mechanical repairs
- Insurance work
- Radar Detectors
- Batteries
- W.O.F
- Painting
- LPG

AT COMPETITIVE PRICES.
 Tasman St, Opunake
 Ph (06) 761-8502

WANT TO DO BUSINESS IN OUR AREA? TALK TO US

Opunake and Coastal News is distributed free to every home and business within the rural area, bounded in the north by the New Plymouth city border, extending east to Egmont Village, and around to the edge of Stratford, south to the Hawera city border and inland to Kaponga and through Eltham.

We are an independent newspaper based in Opunake, which is targeting both the towns and rural communities and we aim to have news coverage within all the areas of our distribution.

We want to be involved with your business call today and discuss your marketing options with the team.

COVERING THE COAST

Promote your business or event in our area call us on **(06) 761-7016**

OPUNAKE & COASTAL NEWS
 • 23 Napier St, Opunake • Ph/Fax 761-7016
 • email: ads@opunakecoastalnews.co.nz



Jonathan Young
MP FOR NEW PLYMOUTH

NEW PLYMOUTH OFFICE
Corner of Liardet and Gill Street
Office hours: 9am - 4.30pm Mon- Fri
P: 06 759 1363 | F: 06 759 1364
E: newplymouthmp@parliament.govt.nz




Hon Chester Borrows,
Whanganui MP

It has been interesting to watch the role the media have played the story of prankster radio presenters in Australia who telephoned the hospital where the Duchess of Cambridge was being treated last week. The mainstream media was happy to play the text of the prank calls and thought it all a hoot until the staff member forwarding the prank call committed suicide.

Now, with the benefit of

The fourth estate

hindsight, even those broadcasting the soundtrack and printing the text are saying the radio presenters should have foreseen what could happen. It all rings a little hollow to me. These are the same tabloid press and women's magazines who seem quite happy to use photographs or recordings, even if taken in a clandestine manner, a scam, or in some other secret way.

Seeing the stress of people hounded by the press is not a pretty sight. Even for those of us who just get miss-reported, miss-quoted or badly photographed, the blood rises, but at least for politicians it is all part of the job. To be hounded, pranked and punked while just going about your duty, in this case in a hospital, is something totally different.

The British media have been caught out behaving in an appalling manner re-

cently. It has ranged from the unscrupulous bugging of phones to meddling in police investigations, all in order to get 'the scoop' ahead of other media outlets. Their response to the Aussie scam was far different from media in New Zealand. It is now amazing to see how pious the English media have become in light of this tragedy. Some media seek to separate themselves from other publications and brands of journalism. They seek to differentiate and disinfect themselves from any collective responsibility. Some would say we shouldn't let them - they are all media.

Yet this is the same way we make blanket assertions of other occupational groups such as used-car salesmen, travelling salesmen, teachers, lawyers, judges and, yep, even politicians. The trouble with lumping any group together is that sooner

or later we want to separate them so we can rely on their integrity in spite of all the perceived evidence against them. "All lawyers are crooks, except my lawyer who can be trusted". "All politicians are corrupt, except the one I voted for who is a truly nice bloke", (or bloke-ess)

And the trouble with scathing all media is that we truly want to rely on information we gain from the press and the broadcaster. Unless we investigate for ourselves, all information is written by someone and so sooner or later we have to rely on the word of another. For current affairs, and many other sorts of affairs it seems, we have to rely on the gossip we hear most often - the media.

Love them or hate them, seems we are stuck with them; and they with us.

Chester Borrows
MP for Whanganui

Coastal Welders 027 255 8677
06 752 8138

The team would like to thank our clients for their support throughout the year. We will be closing at 2 pm on Friday 21 December and will be back in action on Monday 7 January.



We are a local company training local people. Email us at coastalwelders@xtra.co.nz WAREA

For advertising phone (06) 761 7016



Taranaki wide sales, hire and service. Free delivery, competitive prices.

MOBILITY SCOOTERS and all living aids - we'll help you with whatever you need.

Kevin & Marilyn Bromell
279 Broadway Stratford
Ph (06) 765-7633
Freephone 0800 765 763
www.mobilityandmore.co.nz



Andrew Little, List MP

By the time you read this, the alcohol reform legislation should have finally passed through Parliament. It's either an amazing coincidence or a sick joke that it should pass at the height of the season when the most alcohol is consumed. The pity of the new law is that it still doesn't treat alcohol as the addictive drug that it is. The law still assumes that we must have maximum access to alcohol after a certain age. There is very little regulation of the manufac-

Alcohol law change a lost opportunity

turers of alcoholic beverages, especially of their decisions on marketing and advertising.

Efforts by Opposition politicians to amend the law to restrict advertising, for example by preventing billboard advertising within a specified distance from schools, were knocked back. An attempt to reduce the alcohol content of 'ready-to-drinks', the favoured drop of teens and other young drinkers and deliberately targeted at them by the liquor companies, was similarly rejected by the government.

After intense lobbying of government ministers by the industry, the liquor barons will be left to "self-regulate". Until the law change started its journey through Parliament and only after amendments were put up restricting what liquor companies could

do, especially in relation to young people, the industry hadn't given a thought to the social impact of their products.

Quite what benevolent mood will now sweep the very people who profit from the present day unhealthy consumption of grog by our young isn't yet evident to me. And I'm not holding my breath. There is one development in the new law that might make a difference. It is the power of local councils to make local alcohol policies.

Under this part of the law, district and city councils can decide such things as how many liquor outlets they will have in their area, what opening hours will be allowed for bars, restrictions on places where alcohol is consumed, and so on. The local alcohol policy law will mean deci-

sions on alcohol restrictions in a particular community will be made by that community.

The problem I see with this is the same as when we used to have the three-yearly referendum on alcohol regulation and ended up with 'dry' areas in a number of places. You couldn't drink in the dry zones, so you just went somewhere else. The problems became someone else's. And if councils cannot make decisions on liquor regulation, then the default ones in the new law apply - latest closing time at 4am, liquor stores subject only to a good character test for the owner, and not much else.

Let's hope the new law will mark a change in our drinking culture. The health of our communities depends on it.



Robin, Glenice and the team at Houghtons would like to wish all their clients a very Merry Christmas

We will be closed from 1pm Thursday 20th December until Wednesday 16th January 2013.

Houghton's
Plumbing, Heating & Gas Ltd

PHONE 06 278 8883
PRINCES ST, HAWERA



Travel Free on the bus

Tuesday 18 - Friday 21 December
on these once-a-week routes:

Manaia → Hawera Tues 18 Dec
Waverley → Hawera Thurs 20 Dec
Opunake → Hawera Fri 21 Dec
Opunake → New Plymouth Fri 21 Dec

Pre-booking essential
Booked seats will take priority over casual travellers

For bookings and timetable information on these services:
Ph Hawera Taxis: 0800 278 7171 Waverley-Hawera-Manaia-Opunake
Ph Pickering Motors: 06 761 8363 Opunake-New Plymouth

SouthLink
taranakibus.info

Thanks for your support this year



On this month in history

On December 6, 1935 Australian-born Michael Joseph Savage (1872-1940) assumed the office as the first Labour prime minister. The General Election was held the week before. He had been involved in the Labour movement in Australia and had worked in a shop, as well as being a farmhand and goldminer. He arrived in New Zealand in 1907 and worked as a cellarhand and flax-mill hand. He stood for Auckland Central in 1911 as a Socialist Party candidate, but was not elected. He joined the Labour Party in 1916 when it was formed in the same year. He was elected to Parliament for Auckland West and in 1923 was elected deputy leader and the leader in 1933. His Government made many reforms to help the needy, vulnerable and unemployed. Many people had his portrait in a prominent place in their house, as he was beloved by many.

Virtues from the Past

On Sunday December 2 well-known actress Dame Kate Harcourt was involved in two performances at the Cue Theatre, Inglewood. The show was presented by Kapiti Genealogy entitled 'Why you are You'.

Dame Kate shared a 'kitchen table' with Clive Palmer and Sue Greene as they examined and discussed the thespian's ancestry and life, with the aid of a Power Point presentation.

The three read from scripts and it was interesting to learn that Dame Kate's heritage stems from Scotland and England - with names such as Cameron, MacFarlane and Fulton in her ancestry. For example, John MacFarlane (Dame Kate's great-grandfather) married Catherine Cameron (Dame Kate's great-grandmother) in Wellington in 1848.

It was intriguing to hear all about Dame Kate's life.



From left, Dame Kate Harcourt, Sue Green and Clive Palmer.

How many people knew she was originally trained as a kindergarten teacher? She was born in Amberley, north of Christchurch in 1927. Her first love was music and she trained in Melbourne and London, but acting gradually took over.

She is justifiable proud of

her accomplished children Miranda an acclaimed actress in her own right and acting tutor, as well as Gordon who fronts Television's 'Fair Go'.

The show was well put together and presented, but perhaps needed more variety; some excerpts from some of

her acting roles would have been a worthwhile addition.

Dame Kate is New Zealand's oldest working actress. She recently won first prize at the 2011 Rhodes Island Film Festival for her role as 'Grace' a forthright rest home resident in the NZ film 'Pacific Dreams'.

Meads Motorcycle Service
9 Main South Road Manaia
Ph 06 274 8216 Mobile 027 2104673



We wish all our customers a Happy Christmas

For all Your Farm Bike Needs



Stepping Stones

Early Childhood and Education Centre Okato

Opening Hours: Monday to Friday: 8.30 - 3.00

Wishing all a Safe and Happy Holidays
Taking enrolments now for 2013, please email steppingstonece@hotmail.com for enrolment pack. Term one starts 28th Jan 2013

For any information please phone Sarah on 06 7524289



Merry Christmas & Happy New Year - closed Stat days only

348 South Rd Hawera,
Ph: 06 278 7974, Mob: 0274 452 207
E: storage.equipment.hire@xtra.co.nz

We've got the lot!



- Prompt On-Farm Call Out Service
- Fitting & Balancing
- Tractor, Truck & Motorbike
- Wheel Alignment
- FREE Tyre Safety Checks
- General Tyre repairs

ADVANTAGE
THE TYRE PROFESSIONALS

Dean Cameron's Tyre Centre
BROADWAY SOUTH • STRATFORD • 765 8401 • 021 061 3895

New outdoors activity safety check website launched

New Zealand wears the adventure tourism brand proudly. We've got 'the goods' for any conceivable outdoor adventure on land, water or up in the air that New Zealanders and tourists alike enjoy, but our safety reputation has taken a bit of a hit recently.

Rule number two of the Outdoor Safety Code is to tell someone where you are going. Straight forward enough, except we're not. The latest figures show that our casual Kiwi attitude has led to an increase in fatalities and search and rescue operations.

Due to launch December 6 is Safety Outdoors, providing a simple and effective new service. As the only safety check service in New Zealand for outdoors activity the company is committed to ensuring each and every person who signs up with them is accounted for. It is a simple, convenient and reliable system involving a free phone call, text or online registration beforehand and confirmation of finishing afterwards. It works because it doesn't necessitate planning ahead and is available for any outdoors activity.

Safety Outdoors Director, Stuart Fraser says a major point of difference is that they are acting as the trusted outdoor contact for every booking.

"If we don't hear from you within the registered time frame operators based in

New Zealand, working in real time, follow a checking process with every contact point provided. If necessary, we can then notify the appropriate authority."

Fraser is confident the safety of tourists and kiwis in the outdoors will be improved significantly through what he describes as a unique service.

"We want New Zealanders to take this on board as part of their outdoors routine, and tourists to be fully aware of the service when travelling. We want to save lives and, in turn, reduce the rising cost of rescue operations."

As the Department of Conservation no longer accepts Outdoors Intentions forms at their visitor centres there is a critical

lack of source information available for Search and Rescue efforts if required.

There are several options available for users of Safety Outdoors with the emphasis on not only register-

ing yourself but also family and friends. The cost is per activity only, and involves everyone involved in your group, not per person, making this both an affordable and easy decision.



Telling people where you are going avoids costly search and rescue operations



Merry Christmas to all our valued customers from Ian, Marianne & the Team. Have a Happy New Year

Penniall Jordan
PLUMBING • HEATING • GASFITTING
The heat is on!

WE TRAVEL TARANAKI WIDE!
191 Broadway - Stratford
Phone (06) 765 5336
www.pennialljordan.co.nz

Health Haven

Corner Tasman
& Napier Streets, Opunake
06 761 7511

FOR ALL YOUR NATURAL HEALTH AND WELLBEING NEEDS.

Merry Christmas to everyone from us all.
Open every day until Christmas



Are you living your best possible life?

Holistic Counselling & Healing
Freeing you from that "stuck place"

Meegan Care | 06 752 4826
Dip. Psychosynthesis Counselling
www.meegancare.co.nz



SURF HIGHWAY SIGNS LTD
Tony Brown
21 Napier st

ASK ME ABOUT ANY SIGN!
0274 628 632 mb 06 763 8215 hm
06 761 8020



NOVUS AUTO GLASS
The Windscreen Repair Experts

ALL AUTOGLASS REPAIR & REPLACEMENT

- MOBILE SERVICE • TARANAKI WIDE
- INSURANCE & PRIVATE WORK
- CARS, TRUCKS, BUSES.

0800 10 35 35
70 Hurlstone Drive, New Plymouth
www.novus.co.nz
Ph: 06 758 7978

Taranaki business recognised at Sustainable Business Awards

Winners of the country's leading sustainable business awards, Sustainable 60, were announced at an event held in Auckland recently.

Five organisations were recognised for their category and overall excellence for incorporating sustainable practices into the operation and management of their

businesses. seek out trade partners who also use sustainable practices. This creates a domino effect in the production and supply chain, which is good for the environment, the economy and the wider community," says Caitlin Sykes, editor of Unlimited magazine.

Judged in the areas of Community, Environment, Marketplace, Strategy and Governance, and Workplace, businesses could enter one or more categories. To qualify for the Overall Small, Medium and Large awards they must meet entry criteria in other

efficiency and is now integrated throughout the business. For example, towels are downgraded as they deteriorate from hotel A-grade, to three star quality for rest homes or three star motels, down to one star for rugby teams and freezing works; eventually becoming rags, which are washed and re-used for as long as possible.

PowerSmart won the Community award and was also named Overall Small business winner by working to assist householders gain control of their energy generation and use. Its initiative in Tokelau, supporting the island nation to achieve 100 percent solar power, was particularly impressive to the judges.

Meridian Energy, awarded winner in Environment, "... ticks all the boxes with its high standard of environmental management and community," said the judges. Meridian's latest wind farm project, TeUku, was provided as an example of excellence in this area.

Sheep, beef and forestry agribusiness Aohanga, in the Northern Wairarapa,

takes out the award for Strategy and Governance. Combined with its 100 year plan, Aohanga's governance practices ensure it balances the drivers and challenges that span legislative, economic, cultural, social and environmental responsibility.

Winner of the Large Business award, Westpac New Zealand has had a commitment to sustainable business practice for well over a decade. It has a strong commitment to its community, workforce and managing and lowering its environmental impact.

"We would like to congratulate all of the winners and finalists for their ongoing commitment to sustainable business practice. Sustainability promotes corporate responsibility and benefits the wider community and environment," says Sykes.

This year's winners will be invited to speak at a series of workshops to promote sustainability to other businesses early next year across New Zealand. For more information and a full list of this year's finalists visit www.sustainable60.co.nz.



Sustainable business - simple, but effective

businesses. "With more companies taking part this year, we are really pleased to see sustainable business practices being embraced. Part of the circular nature of sustainability means early adopters

specified areas. Winner of both Marketplace and Medium Business awards, La Nuova Apparelmaster is a Taranaki-based laundry and drycleaning operation. Its sustainability journey started with energy

Lions Club nurturing green fingers at Rahotu

Six weeks of digging, planting and weeding came to a nail-biting conclusion on Saturday for 35 pupils of Rahotu Primary School.

The Pungarehu-Rahotu Lions Club runs a gardening competition for the school each year, with the titles of Best Junior and Best Senior Gardener up for grabs. Just before Labour Weekend the kids are given punnets of lettuce, broccoli and cabbages along with carrot, beetroot and radish seeds. They are then judged on plant health, size, garden tidiness and the grower's enthusiasm and knowledge.

Six Lions Club members spend a Saturday driving around the district. Keen gardeners and Lions members Trevor and Janeen-Vercoe have grown the seedlings for the past couple of years, after the costs

of buying them in became astronomical.

"One year we had 60 children, and the plants cost us \$900 so we decided to grow our own," said Mrs Vercoe. "But it's a learning curve. Last year the lettuce got so big we had to buy some to give to the kids. This year the cabbages almost hearted up before we gave them out. We'll probably get it right next year."

The club's aim is to get the children participating, with a bit of healthy competition thrown in.

Right: Eva Fleming Gordon anxiously awaits Judge Trevor Vercoe's verdict during the Rahotu Primary School Garden competition held on Saturday December 8. Picture by Jan O'Connor



Masters of sustainability.



When we look after your business, we also look after the environment. At Apparelmaster, we rent and professionally launder workwear, overalls, towels and mats, supply and service washroom supplies and OSH-standard first aid kits - and we do it in an eco-friendly way.

NEW ZEALAND, COVERED AT WORK

Patea and Waverley opt for fluoride

The South Taranaki District Council (STDC) voted 10-3 in favour of introducing fluoride into the Patea and Waverley water supplies.

The decision by the STDC has received praise from the DHB, local dentists and

medical practitioners who understand the ramifications of this decision.

Dental Clinical Leader Dr David Antunovic said this is a great decision for the people of Patea and Waverley who will benefit from community

water fluoridation and good oral health for life!

“Well done to the South Taranaki District Council for their common sense and evidencebased deliberations. I’d like to congratulate the councillors on their intel-

ligent and courageous decision. Councillors had to wade through a huge amount of paper work and submissions to come to their conclusion,” he said.

“It is gratifying that the Council has chosen to take the

advice of health professionals and experts in this field.”

“There is unequivocal evidence that adding that community water fluoridation to water is the safest and most effective way to protect and improve the dental health of the whole community, irrespective of their income, status or age,” said Dr Antunovic

“We were able to show that the oral health of those living

in Waverley and Patea were well below those of other parts of Taranaki, who have enjoyed fluoridated water for many years.

“We also had support from dental and medical professionals, our own board members, along with the Ministry of Health who all showed combined commitment to improving the oral health status of those living in Patea and Waverley.”

Gala fun at CTS



ABOVE: Coastal Taranaki School principal Allan Miles gamely volunteering for a dunking at their recent school gala.



ABOVE: Girls together from left Hazel Baker, Sio-bahn Manuel and Ella Beaumont at Coastal Taranaki School’s recent gala..

Otakeho Indoor Bowls Christmas Tournament

The Otakeho Indoor Bowling Club recently held a Christmas Tournament and the winners were: Gordon Hamley (skip), Jane Augustine, Bob Buhler and Kaye Bird. Runners up: Paul Midgley (Skip), Jenny Hamley, Noel Thompson and Agnes Buhler.

All participating teams received a small prize and the raffles were won by Ray Finlay and Gordon Chisnall.

President Don Semple thanked everyone for their support and wished everyone a Happy Christmas.

A festive supper was enjoyed by all.

Taranaki Indoor Bowls officers elected

At a recent AGM and Special meeting of the Taranaki Indoor Bowls Centre Inc. held in Hawera the following officers were elected for the 2013 season:

- Patron: Jim Nickel
- President: Bill Schrader
- Vice President: Brian Hardgrave
- Minute Secretary: Karl Hughes
- Tournament Secretary: Brian Hardgrave
- Treasurer: Sue Bourne
- Publicity Officer: Jenny Hamley
- Senior Selector: Max Rowland
- Junior Selector: Michelle Watt

President Bill Schrader spoke on the need for positive promotion of the game and the importance to gain new members. He advised that the centre will be working in contact with Michelle Watt who is the Sports Development Officer for Indoor Bowls at Sport Taranaki – Michelle is developing the sport within Taranaki schools, and she sees the clubs coming on board to accept these younger members.

In **2** *Flooring Ltd*

We wish to thank all our loyal customers.

Hope you have a great Christmas and prosperous New Year.

Workshop (06) 278 1494
Mobile 027 446 2494
A/H (06) 278 3638
24 Scott Street, Hawera

CHRISTMAS GIFT IDEAS

Closed Stat Days & 31.12.12

Save up to **\$890** on Grizzlys

Loads of Gift ideas instore - Bags, T-Shirts, Caps, Wallets, Goggles and more...

FREE KIDS CAMPING PACK valued at \$300 with yamaha fun bikes

Fun Bikes from \$1939

YAMAHA *mtf*

Authorised Yamaha and Gas Gas Sales and Service Centre

Gift Vouchers Available

309 South Road Hawera
Ph/Fax: 06 278 4756 | Mob: 0274 540 073
Email: baileymotorcycles@xtra.co.nz

OPEN SAT 10am To 12pm.

Bailey MOTOR & DISMANTLERS
Cycles

YMF
LOAN LEASE

Tasman Marine

Call us and cruise into the boating season

- We service all brands.
- Full chandlery serviced
- Re powering options with Evinrude, Mercury and Yamaha
- Professional and friendly advice

27 Ocean View Parade, New Plymouth
Ph: 06 769 5656
www.tasmarine.co.nz
143 Glover Road, Hawera
Ph: 06 278 7187

TWO GREAT LOCATIONS

McLAY BOATS
Bargain BOAT Bits

EVINRUDE

YAMAHA

XTREME
SERIOUSLY ALUMINUM Boats

MERCURY
"If On The Water"

Wishing you a Merry Christmas & Happy New Year from the Team at Tasman Marine

AEA Stainless Jetter Tubs

Corkill Systems
Paul Dulby
Peter Mullan
Joe and Anne Smith
Brendon Harrop
George Thony
and many others with thanks for involving us in your projects over the year.
Merry Christmas

111A Tasman St, Opunake
Ph (06) 761-8834

Nominations close 16 December for top dairying woman award

Women working in the dairy industry are being urged to get their nominations in for the 2013 Dairy Woman of the Year award, which closes for entry on 16 December 2012.

Sponsored by Fonterra, the prestigious award includes the chance to attend the year-long Women in Leadership course run by Global Women, worth \$25,000.

Dairy Women's Network chief executive Sarah Speight said the Dairy Woman of the Year award celebrates and advances women who are making a real difference in the dairy industry, in their dairying businesses and in their communities.

women are the pillars of their communities. They are extraordinarily passionate farmers, pushing not only their own boundaries but those of the industry, continuously looking for ways we can all benefit. We want to hear about these women!

"We are asking their colleagues, friends, husbands or business partners to please nominate them for this important award before entries close on 16 December."

The Dairy Woman of the Year will be announced at a gala dinner at the Dairy Women's Network annual conference on 20 March 2013 in Nelson. Full information and nomination forms can be downloaded at the Dairy Women's Network website: www.dwn.co.nz.

Za Mazing shop in Manaia



The Healing Room allows private therapeutic consultation. Look at page 13 (upper) for the merchandise on sale.

Three like-minded women run a relatively new shop in Manaia called Za Mazing.

Gail, Lisa and Moonstar run the shop as a co-operative venture where craft and other merchandise is sold – much of which is created by the three. The enterprise also offers services such as therapeutic massage, tarot readings, numerology, Past Life Regression, Aura/chakra photography, Name Certificates and natural remedies in their Healing Room.

Moonstar's emphasis is on therapy and she offers Crystal reading and healing, Chakra Balancing, as

well as therapeutic massage.

The shared philosophy of the women is that what they sell is organic, Fair Trade products with recycling an important consideration. As much as possible they buy locally generated produce. They also share a commitment to help others, especially those in need of kindness or therapy. "I love it, especially if you are able to help someone and get a weight off their shoulders. It makes our day if we know we've helped someone", explains Gail.

"We all have something special to offer and shine in our own special way",

adds Lisa. She offers Relaxation and Zone Therapy, Crystal Chakra Balancing, and Ear candling. She also has a good stock of Nag Champa products and Indian perfumes.

Za Mazing is situated at 61 Main Street – just next door to the petrol service station. They are open six days; Monday to Friday 9.30am to 4pm and Saturdays 9.30am to 3pm.

There is such a wide range of attractively presented merchandise that it is hard to know where to start. Here is just a small sample of what is on offer. There is a lot of jewellery on display, such as crystal bracelets, crystal

necklaces that are made to order on site and pendants. Organic fertiliser is also on sale. There are some interesting items made from recycled cans such as aeroplanes, cars and lizards. Gail says her husband Dave helps with these. There is a good range of greeting cards. Bach and First Light flower Essences are also available.

Gail, Lisa and Moonstar are looking forward to buyers seeking Christmas gifts and intend to be open as much as possible – just closing for Christmas day and New Year's Day. You can phone (or text) the shop at 027 9292 122.

Za Mazing for Natural Healing, Crystals and Crafts. At 61 Main St, Manaia.

Open 7 days – Mon to Fri 9:30am to 4pm
Sat 9:30 to 3pm.

We stay open except for Xmas and New Years day.

zamazing61@gmail.com

For advertising phone
(06) 761 7016

Twins achieve top places at St Mary's



St Mary's Diocesan School is pleased to announce that the 2012 Dux is Charlotte Smith (pictured on left). Proxime Accessit is her twin sister Brittany Smith (pictured on right). Charlotte was Head Boarder for 2012; Brittany was Head Girl for 2012.

We sell Garden Gift Cards

Visit 'The Raised Eyebrow' Cafe

See Fairfield's Garden Centre

For Practical Gifts for Gardeners

Fruit Trees, Native Trees, Wolf Brand Tools, Niwashi Cultivators, Insect Eating Plants, Kneelers, Ceramic Pots, Electronic Tap Timers and so much more all awaits you at Fairfield's

Just down the road from Tupare Gardens

GOOD GROWTH IS GAINED FROM GREAT KNOWLEDGE

Corner Mangorei Rd & Junction Road New Plymouth
Call us today on (06) 7588831
open 7 days 8.30 to 5pm
Your friendly 'Go Gardening' Centre



Above: Some of the stock on sale at Za Mazing

PHIL COATSWORTH CONTRACTING
0800 WE BALE

* FOR ALL YOUR HAY AND SILAGE NEEDS
 * MOW, RAKE, BALE, WRAP
 * ROUND, SQUARE, CONVENTIONAL
 * COMPETITIVE PRICES
 * OWNER OPERATOR

92 Collingwood St, Eltham 021 182 4166

Entertaining Xmas parade in Okato



Okato people turned out in force to see the Christmas parade.

“Very impressive with some very funny floats”, was the reaction of one on-looker, who said she had only recently moved to Okato. She and throngs of people watched as about a dozen floats made their way down Carthew Street on Sunday December 9 at 6.30pm. One float summed up the real meaning of Christmas which is often overlooked: “Jesus is the reason for the season”. The procession got off bang on time led by the local fire brigade and closely fol-

lowed by three bagpipers and a lone drummer. ‘Scotland the Brave’ was one tune they played. The floats were certainly flamboyant with a wide variety of creativity. There was plenty of crowd participation with lollies being thrown and youngsters scrambling to gather them up. Some of the float people had water pistols and there was lots of fun and jollity. Several Santas (or their helpers) appeared in various shapes and sizes making their presence felt along with Rudolph, Nativity Scenes and much more. Santa com-

mented, “It’s wonderful. Wonderful. It’s as good as last year, if not better than last year”. Well done to everyone who took part and what a great turnout of people.



A towering float which didn't topple.

THE SHED SPECIALISTS

Need a shed?
 You need Mike or John at Standard Timber ITM
 They know how to build 'em right!
 Pleased to supply the new buildings




Mike Henry John Briggs

06 765 7800
 www.standardtimberitm.co.nz

STANDARD TIMBER
 103 BROADWAY NORTH, STRATFORD

SANDFORDS RURAL CARRIERS

Rural & General Cartage
 Specialising in
 • Palm Kernel • Fertiliser
 • Aggregate • Hay & Silage Bales

Livestock Cartage
 Depots: Okato, Auroa, Hawera & Waitara

Readymix Concrete
 Depots: Hawera & Wiremu

Ground Spreading
 4WD Trucks spreadmark certified, GPS proof of placement.

0508 726 336 or
 06 274 5852

SANDFORD LIMITED

Coastal Agri Services Tasman Street - Opunake

Kevin's Annual Shout

Friday 21st December 6 - 9 pm

To thank all of our Valued Clients
in 2012, Join the team for some
food and drinks.

Tasman Street, Opunake

(06) 761 7079

24 Hour Service - 7 Days a Week

Phone or call in to discuss
your system anytime
Ph 06 761 7079

TO
ADVERTISE
HERE
PH: 06 761 7016

2011-2012 – goes down in history as the best dairy season on record

Last year's dairy season will go down in history as the most productive on record thanks to very favourable pasture growth conditions.

New Zealand's milk production leaped 11.3%, according to the 2011-12 New Zealand Dairy Statistics publication released recently by LIC and industry-good body DairyNZ.

Average production per cow reached a new record of 364 kilograms of milk solids, and more cows being milked resulted in dairy companies processing 19.1 billion litres of milk containing 1.69 billion kilograms of milk solids in the year ending 31 May 2012. Milk production per hectare of 1,028 kg surpassed the 1,000 kg mark for the first time.

The 2011-12 New Zealand Dairy Statistics report is made up of data sourced from the LIC National Database, dairy companies, Animal Evaluation data-

base, Animal Health Board Annual Report, Real Estate Institute of NZ and Statistics New Zealand.

Other key statistics from 2011/2012 include:

Production

The milk production increase was the first double digit increase since 2000-01 and was due to a lift in milk solids production per cow (80%) and more cows milked (20%).

Production per cow increased by 9% to an average of 364 kg milk solids (comprising 206 kg milkfat and 158 kg protein).

Most regions recorded double digit increases in milk solids produced per hectare with the North Island averaging 12.0% and the South Island averaging 10.1%.

Breed averages

The trend of increasing Holstein-Friesian/Jersey Crossbred cows continues with this breed comprising 41% of the national herd in 2011-12. A decade ago it was only 23%.

Holstein-Friesians cows have declined from 54% in 2001-02 to 40% in 2011-12, now slightly below the number of Crossbred cows.

For all four breeds, six-year-old cows produced more milk solids (kg) than any other age group.

Cow population and herd size/distribution

Cow numbers milked increased by 105,500 (+2.3%) to 4.6 million cows.

Total number of herds increased by 63 (to 11,798) - the fourth consecutive season of small increases.

Herds run under share-milking agreements eased to 34.2% (4,034 herds) in 2011-12. Within this 18.8% of herds (2,218) are run as 50:50 agreements.

Average herd size was 393, up seven cows on the previous season which was assisted by the expansion of the dairy herd in the South Island. The national average herd size was only 271 cows,

10 years ago.

10% of herds have 750 or more cows.

25% of herds had 500 or more cows, contrasting to a decade ago when only nine per cent had 500 or more cows.

The most common herd size

highest average herd production at 307,611 kilograms of milk solids. This reflects a combination of larger herd sizes, a high stocking rate, and high kilograms of milk solids per cow.

Hawkes Bay recorded the highest average herd pro-



Holy Cow! - they gave us the best season on record.

remains in the range of 200 to 249 cows, comprising 14.5% of herds.

Regional dairy statistics

25% of all dairy cows are located in the Waikato region, followed by North Canterbury (12%), Southland (11%) and Taranaki (10%). This is the first time Southland has surpassed Taranaki in cow numbers.

South Island average herd size of 596 cows is increasing faster than North Island (average 327 cows).

South Island farms are, on average, larger than those in the North Island (farm area and cow numbers).

1.7 million (37%) of all dairy cows are located in the South Island and the South Island accounts for 39% of New Zealand's total milk solids production.

South Island farms have, on average, higher per herd production than herds in the North Island, with South Canterbury recording the

duction in the North Island with 230,022 kilograms of milk solids, reflecting large herd sizes.

Average production per effective hectare and production per cow was higher in the South Island than in the North Island.

North Canterbury recorded the highest average milk solids per hectare in the South Island (1,361 kg), while

Waikato had the highest average milk solids production per hectare in the North Island (1,057 kg).

South Taranaki continues to be the district with the most herds (1,040) followed by Matamata-Piako (1,004).

Herd testing and artificial breeding (AB)

A record 3.36 million cows were herd tested and 3.4 million cows were put to AB in 2011-12.

The percentage of total herds and the percentage of total cows using herd testing continues to increase, 73.5% and 72.6% respectively.

The number of yearlings to AB increased to 177,000 from 148,500 in the previous season.

The average somatic cell count dropped to 204,000 cells/millilitre in 2011-12, the lowest level since 2000-01.

Dairy farm land sale values Dairy farm land prices have been relatively steady for the past two seasons

The weighted average sale price of dairy farms (\$4.53 million) increased 8.7% in 2011/12.

The weighted average sale price per hectare of \$32,123 is similar to the previous two seasons.

CLAAS



0%
finance*

The perfect couple

CLAAS Forage Technology would like to introduce the perfect couple - the DISCO mower and LINER rake. The DISCO professional linkage mower with heavy duty P series cutterbar provides the ultimate in cutting edge mowing technology. The LINER rake with up to a 10m working width, 2.60m swath width and cardan rotor suspension is its perfect companion. Combined they offer the ultimate partnership in harvesting efficiency.

With an outstanding finance offer available, call us today and invite the perfect couple around to your place.

Merry Xmas
from the Team at
Claas Harvest Centre
Taranaki

CLAAS Harvest Centre Taranaki
Peter Marshall 027 279 7099
Steve Roylance 021 287 5335
www.claasharvestcentre.co.nz

CLAAS

For all your agricultural machinery
and parts
contact

GARRY MILES

Your Coastal Rep
Living locally.

Available 7 days
a week

Workshop on call.



AgTraction Taranaki Sales, Parts, Service

Waiwakaiho

0272 932 356

06 759 8432

www.agtraction.co.nz

Rescue dogs take to the wheel to drive adoptions

New Zealanders have a great track record for creating world firsts. Sir Ed was the first to knock the bastard off, Kate Sheppard was the first to secure the vote for women and Kiwis were the first to take bungy jumping to the world.

MINI wanted to help SPCA Auckland change some common misconceptions about rescue dogs, so they decided, with the help of acclaimed animal trainer Mark Vette and team, to teach three SPCA dogs to drive a MINI Countryman to showcase just how intelligent SPCA rescue dogs are. The training has taken place over the last eight weeks with the dogs set to do their official test drive on Monday 10 December, live on Campbell Live. "Driving a car actively demonstrates to po-

tential rescue dog adopters that you can teach an old dog new tricks. The dogs have achieved amazing things in eight short weeks of training, which really shows with the right environment just how much potential all dogs from the SPCA have as family pets," says Christine Kalin, SPCA Auckland CEO. The project, a collaboration between SPCA Auckland, renowned animal trainer Mark Vette from Animals on Q and MINI New Zealand began just two months ago when three SPCA rescue dogs; Monty, Porter and Ginny were selected from SPCA Auckland. They were rehoused at Animal on Q headquarters and began the doggy driver training process. Commenting on the training, Mark Vette said, "Monty, Porter and Ginny are great dogs each with their own distinct personality. You wouldn't believe any dog could learn to drive

a car on its own and the way all three SPCA rescue dogs have taken to training really does prove that intelligent creatures adapt to the situation they're in. It really is remarkable." Simonne Mearns, MINI Brand Manager New Zealand says MINI has a history of supporting SPCA and wanted to continue that support this year. "This is a fun campaign but we hope it will seriously encourage people to consider SPCA dogs for pets, we want this campaign to raise SPCA awareness and drive adoptions. The MINI Countryman has been modified to suit operation by paws and will be reverted and available for sale after the campaign."

New Zealanders can find out more about the dogs by visiting drivingdogs.co.nz where they can meet Monty, Porter and Ginny online, watch videos of

the training, and find out about their local SPCA and how they can adopt. Ultimately the aim is that an SPCA rescue dog will become top of mind and top choice for people thinking of adopting a pet," says Kalin. "We've seen many people rewarded by the gratefulness of an SPCA rescue dog after adoption and we hope all New Zealanders consider the SPCA as an adoption option."

JKL
JOHN KELLY LIVESTOCK LTD
Gail Drought - Livestock Agent
4036 Main South Road, Opunake | Ph: 06 761 7012 | Fax: 06 761 7018
Mob: 0274 509 108 | Email: seaviewfarm@xtra.co.nz
JKL "Livestock, it's our lives"



SPCA Dog Ginny takes the wheel driving a rescue dog adoption campaign

HASSLE-FREE
NITROGEN DELIVERY

Why waste time driving round the mountain to collect your nitrogen fertiliser, when we can deliver it on farm, direct to you.

To place an order, call **0800 222 090**. Be sure to specify "round the mountain delivery" to qualify for this great time-saving service.

Long distance stars



Cormach Hughson –How and **Tenaya-Jaye Sutcliffe** from the Opunake Athletic Club both broke records at the NOROK Cup day at Opunake on Sunday. **Cormach** broke the 11 year old boys 800 metre record previously held by **Beauden Barrett** in 2002. And **Tenaya** broke the 1500 metre 11,12,13 year old girls record set by **Joellen Hughson** –How in 2009. Both Athletes attend St Josephs Opunake

PGG Wrightson Real Estate

Selling your property? Then call me.

- With over 175 years of local knowledge and experience, PGG Wrightson Real Estate are the leaders in the field. We work together as a team giving our clients the best results and outcome.
- Our nationwide network and referral system gives you access to buyers and properties throughout New Zealand.

John Parry | B 06 278 0420 | M 0274 36 98 98 | ejtparry@xtra.co.nz

Celebrating 50 years of NOROK



Opunake Athletic club patron Graham Dodd and delegates from Opunake, Hawera, Kaponga, and Eltham athletic clubs celebrating 50 years of the NOROK Athletic event originally competed for by clubs from Normanby, Opunake, Rahotu, Okato and Kaponga. Opunake had a great day securing the NOROK cup by two points. Congratulations.

SURF HIGHWAY SIGNS LTD
 Tony Brown
 21 Napier St
ASK ME ABOUT ANY SIGN!
 0274 628 632 mb 06 763 8215 hm
06 761 8020

See our website
www.opunakecoastalnews.co.nz
 for all our new email addresses or refer page 2.

Everlasting Memories and Anderson Monumentalists have joined forces to bring you unbeatable service in headstones and now trade together under our new name,
Headstone Warehouse
 Closing 21 Dec - Re opening 7th Jan 2013
 268 Devon St East NP, 06 75 999 75
 Cnr Collins & High Sts, Hawera, 06 278 5518
www.headstonewarehouse.co.nz

Safe summer swimming with lots of local lifeguards

Pool lifeguard training has been undertaken by a number of Opunake people to ensure all our pool users are safe in the Opunake Community Baths. New lifeguards Sue Pegrum, Lisa Ison, Dean Potier, Cheree Hitchcock, Dylan Arlidge, Hine Janaway-Davis, Jemma Pentalow, Marlene Ruka, and Abigail Weir all undertook training through the Aquatic Centre in Hawera with funding support from Pub Charity. Others to have their pool lifeguard qualifications revalidated this season include Judith Armstrong, Thomas Bell, Laurie Feaver, Rebecca Heemi, Jordan Hooper, Natalie Tatham, and Brock Wilson; with Paul Anderson-Gardiner and Beate Weir about to complete theirs. To help our lifeguards do the best job possible, please remember the law states that all children under 8 years must be supervised at the pool by a caregiver 16 years old or over. Actively supervised means watching your child at all times, being able to provide immediate assistance. The supervision needs to be constant not the occasional glance whilst you read a book or chat with friends. You must take you under 8 children out of the pool if you wish to do lane swimming or leave the facility to buy a coffee. This is law not just local rules – so we can keep all our precious children safe. Our water is warm, so come in and swim with your kids; it is fun and rewarding for everyone involved. See you at the pool.

WE WANT YOU

- 2012 annual accounts not yet completed?
- Not satisfied with the service you receive?
- Accountancy fees too high?

Did you answer yes to one or more of the above questions? DON'T WAIT, come on in to Hughson & Associates, Chartered Accountants in Hawera or Opunake for a free consultation OR WE CAN COME TO YOU!

Currently we are offering a 10 working day turnaround on annual accounting work. (subject to certain conditions).

Here is what else we have to offer:

- Great range of services
- A very competitive price
- Friendly and approachable staff

Come in and have a piece of Mark's famous Christmas cake and some Sherry/Port in a relaxed atmosphere.

New clients who sign up by December 21st will go in the draw to win an iPad mini just in time for Christmas!

Call us today on 278 4169 or 0800 ACCOUNTANT for your free consultation – YOU WILL NOT BE DISAPPOINTED.

HUGHSON & ASSOCIATES
 CHARTERED ACCOUNTANTS
 Accounting for the future, today.

0800 BULL HIRE
2 8 5 5 4 4

A few Ayrshires and Friesians - 2 Year Bulls for Cows.
 Enquiries Welcome.
Washer & Co Oakura
 Talk to Sean on **0800 BULLHIRE**
0800 28 55 44

PS: Glen and Les at Sandfords organise most of the bull transporting. From experience we've found that delivery -

- Yesterday = is impossible
- Today = sometimes can be arranged
- Tomorrow = a little easier
- Sometime this week = easy

Tumahu Golf Club



Catherine Corbett was awarded Life Membership at our last AGM, for her dedication and hard work over the years. A fine recognition of her sterling service to our club.



Joseph Doyle and Brook Gray were selected to play for Taranaki at the Interprovincial Championships held in Dunedin. They were the youngest in the team and this is a fine achievement for the two from Tumahu.



"I'VE NEVER SEEN A COURSE MARSHALL SO STRICT ABOUT BRINGING YOUR BAG ON THE GREEN."

Motorcycle miss



Taylor Rampton lying in front of her RM85 that is showing off her NO 1 plate for winning the NZ junior girls and holding her medal. Pictured also is her new Husqvarna CR125 that she will be riding next year.

Taylor would like to thank everybody who helped and supported her through this last year: Action Suzuki and all the staff; everybody who bought a raffle ticket to help raise funds to get us to the South Island for the Vets and Women's Championships and also the New Zealand Junior Nationals; Opunake High School; my sister Bobbie for doing the skids to

raise funds and also Gary from the old factory for supplying the area for the skids; Steve and Marlies from Opunake Four Square for helping with raffles; Redin Agricultural Contracting of Opunake supplying a digger to build up Taylor's motor cross track; Sandford Bros of Auroa for supplying a huff; Russell Campbell for use of his tractor and trailer and also Chris Redin.

Also thanks to Michael Drought for supplying a digger and uncle Richard for supplying the paddock, Steve and Deb Holmes for their support and Grant Wilson for taking Taylor's bike to the South Island.

Taylor is looking forward to the New Year riding on her new Husqvarna CR125 Without all this support of all the people, Taylor's success would not have been made possible.



To advertise here phone 06 761 7016

OAKURA AUTOMOTIVE
 2012 LIMITED
 PANEL REPAIRS • MECHANICAL SERVICES • HIRE CENTRE

UNDER NEW OWNERSHIP

- Automotive Repairs & Servicing
- Farmbike Repairs And Servicing
- Full Panelbeating Service
 - Can Arrange Top Quality Paint Work

Hireage Of:

- 4 Metre Scaffolding • Generator • Post Hole Borer
- Car Trailer • Hedge Trimmers • Rotary Hoe • Chainsaws
- Horse Float • Scrub Cutters • Concrete Cutter
- 4 Metre Ladders • Trailer Mulcher • Concrete Equipment
- Lawnboys • Tandem Trailer • Kelly Float • Lawnmowers
- Trencher (Small) • Concrete Mixer • Plasma Cutter
- Trencher (Large) • Drop Saw • Plate Compactor
- Waterblaster • Gas Spit • Pole Trowels • Woodsplitter

Increasing stock constantly, please ring if you have a product query

Open: 8am To 5pm Mon - Fri
Sat 9am To 12 Noon (for hireage)

1 Victoria Road, Oakura
 Opp Corbett Park Ph: 06 752 7485

SINCLAIR
 FARM KILL AND PROCESSING

- Beef • Sheep • Pigs

Call Colin or Bridgitte - 06 765 4460 • 0274 629 282
 121 Cordelia Street, Stratford

1/3 (now) **0% INTEREST** **KINGQUAD**

1/3 (in 12 months)

1/3 (in 24 months)

Right now you can take home a new Suzuki KingQuad 300 for a third deposit (your old bike could be the deposit), pay a third in 12 months and the final third in 24 months with 0% interest. LT-F300F \$10,495 rrp. **Talk to us today!**

KINGQUAD 300 - LT-F300 \$3,627 deposit

offer valid until 31 January 2013 or while stocks last. Normal lending criteria apply, please ask us for full details and cost. Offer not available in conjunction with any other promotion. Documentation fee \$375, 1/3 deposit, 1/3 in 12 months and the final 1/3 payment in 24 months.

Proud to Support Taylor Rampton

Action Suzuki
 141 Glover Rd Hawera.
 Ph: 06 278 4160

Opunake Ladies Bowling Club



Julian Pairs winners 2012: Margy Carey and Val Fleming.

Players from all over New Zealand will be taking part in some, or all of these events. Opunake will be hosting one day of the men's singles on December 30 with local player Des Howry competing that day. On January 5 and 6, our greens will be hosting the women's fours with Joan Barret's team playing on the 5th. Anyone who is interested in bowls is welcome to come and watch and see some top bowlers in action.

The women's interclub final was played over four Saturdays at West End on Saturday December 1. This event was played over four Saturdays as one day was washed out halfway through the first game. On the last day Opunake was lying second to Inglewood, but with some good wins we finished in front by one point. Seven women compromise a team, with Bev Robinson playing the singles, W. Crawford and K Fleming the pairs and J Collins, E Rothwell, Nev L'Ami and V Hangton the fours. The last time that Opunake won this competition was 1998-9 and 1999-2000. On December 6, we played Julian Pairs in awful windy conditions - the same day that the tornado hit Auckland. Players have to have played for a western division club at some time. The winners were Val Fleming and Margy Carey with runners up Kay Horo and Anne Brophy.

The ladies Championship Fours was played in very windy and cold conditions. Four teams competed and the winners were Joy Collins, Anne Nathan, Lois Sole and Pat Barrett. The annual Police Triples Tournament was played with a full green

of bowlers. This popular event was won by Gary Kerr, P. Pepperell and Jason Hazzard. Runners up were Bill Rothwell, Len Reader and Pinto Brophy. The ladies President's Trophy was won by Bev Robinson, Lois Sole, and Val Wallace.

The National Open Championships are being held in New Plymouth from December 28 to January 9. This is for men and women and involves singles, pairs and fours events. It will be a massive logistical exercise with players, greens and umpires to be organised.

No sun at the Olex run



On Sunday December 2 it poured in Okato. However, this did not put off the many runners and walkers who set off regardless in the Olex Fun Run/Walk. Perhaps the 'fun' aspect wasn't quite as strong as other years when the sun was shining.



Exceptional service when you need it most

Phone 759 0912 at anytime

- Member FDANZ gives you added assurance
- Modern chapel with adjacent catering lounge
- Plenty of off-street parking
- Prearranged funeral plans at no charge
- Environmentally friendly options

Exceptional service... when you need it most

At Vospers, we show we care by attending to every little detail to make the service everything you'd like it to be. And we don't stop caring when the funeral is over, because at Vospers, nothing is too much trouble.

Vospers funeral directors Andrew King, Kirsty Mehrtens, Bruce Hanrahan (Manager), Darr MacLachlan & Paul Shaw.



257 Devon St East, New Plymouth | www.vospers.co.nz

RENTAL VEHICLES



- CHARTER BUSES
- VANS
- TOUR BUSES

ALUMINIUM SCAFFOLDING FOR HIRE

\$35 per day, \$50 weekend. More than 6 days \$30 per day.

WATERBLASTER FOR HIRE

Petrol 3000 psi 15L/minC
Cost: Half day \$90, Full day \$120, Weekend \$130. Friday after 3pm return Monday 9am.
Bond for waterblaster and scaffolding \$50.
For more information contact Tracey or Christine at

PICKERING MOTORS

11 TENNYSON ST OPUNAKE PH (06) 761-8363
0800 22 11 20 Email: pickering.motors@xtra.co.nz

HUGHSON & ASSOCIATES

WE ARE YOUR PERSONAL, FRIENDLY FARMING & BUSINESS ACCOUNTING SPECIALISTS

0800 ACCOUNTANT
2 2 2 6 8 6

OPUNAKE OFFICE is OPEN every WED 9.30am-3pm

Ph our Hawera office on (06) 278-4169 • 26 Wellington St, Hawera
or E-mail: services@hughson.co.nz www.hughson.co.nz



Mark G Hughson, B.B.S., C.A., Dip B.S



Dorothea Henry

YOUR CHARTERED ACCOUNTANT

- is a member of the New Zealand Institute of Chartered Accountants
- studied for 7 years to achieve his professional qualification
- is required to undertake on going professional development
- is bound by a code of ethics and professional standards
- has a professional qualification from New Zealand that is internationally recognised

Look for the word "Chartered" your assurance of quality



Opunake Butchery



Limited

Nikki, Haines and staff wish all our customers a very Merry Christmas and a Happy New Year.

Taking orders for Christmas and New Year

Home Kill Bookings Closed - 21 Dec till 7 Jan

Phone: 06 761 8115
AHours: 027 333 5312

Opunake Pony Club

More than 100 horses and ponies converged on Opunake for the Opunake Pony Club mini show recently. The day was a great success with 117 entries competing for prize money in 53 classes.

Local pony club members meet regularly for rallies in Opunake and host a mini show annually. Anybody wanting to become part of this great club can contact Jocelyn on 761 8092.

Opunake Pony Club Mini Show Results for 20th October 2012:

Showjumping:

Horse AM3 95cm, Aimee Schumacher, Dee's Sailor 1st, Matthew Grayling, NRM Wairakau 2nd, Emilie Husillos 3rd, Robyn King, Alexander Bay 4th.

Horse AM5 1.05m, Robert Steele, Midnight Tiki 1st, Winner of Corkill Trophy. Robert Steele, 1st Light 2nd, Robyn King, Alexander Bay 3rd, Kelsey Espin, Glamorous 4th.

Horse AM5 1.05m, 1.10m Robert Steele, Midnight Tiki 1st, Kirsty Hurley, The Hustler 2nd, Robert Steele, Roulette 3rd, Robert Steele, 1st Light 4th.

Pony AM3 95cm, Brett Morrison, Cyclone Fergie 1st, Sarah Currie-Newton, By ways I'm cool 2nd, Jakartia Munro-Smith, Dragonwyck Bollinger 3rd, Ashleigh Clement, My Boy Danny 4th.

Pony AM5 1.05m, Sarah Currie-Newton, By Ways I'm Cool 1st, Kieran Wood, Kababa Bay 2nd, Simon Wood, SupreKazam 3rd, Cate Tulloch, Whistledown Annie Oakley 4th.

Pony AM5 1.05m, 1.10m Ashleigh Clement, My Boy Danny 1st, Kieran Wood, Kababa Bay 2nd, Jacqui Tulloch, Cosmic Zipper 3rd, Sarah Currie-Newton, By Ways I'm Cool 4th.

Horse AM3 75cm, Kyla Hamblyn, Kaycee 1st, Jess Nairn, Tai 2nd, Tanya Dickey, Kiwi Flex 3rd, Cassie Herbert, Celtic Sun 4th.

Horse AM5 85cm, Aimee Schumacher, PuketawaTuatahi 1st, Jess Nairn, Tai 2nd, Tanya Dickey, Kiwi Flex 3rd, Erin Turner, Captured in Colour 4th.

Horse AM5 95cm, Briar Langridge, Hartshill Blaze 1st, David Wood, Buddha 2nd, Robert Steele Tigger 3rd, Robyn King, Piccadilly Bay 4th.

Pony AM3 65cm, Olivia Smith, Precious Gem 1st, Brittany Simonson, Just Anything 2nd, Janelle Lobb, Flicka 3rd, Isabella Hibell, Jiggysaw 4th.

Pony AM5 75cm, Meagan George, Miss Independence 1st, Janelle Lobb, Flicka 2nd, Maeghan King, Magic Man 3rd, Isabella Hibell, Jiggysaw 4th.

Pony AM5 85cm, Meagan George, Miss Independence 1st, Janelle Lobb, Flicka 2nd, Maeghan King, Magic Man 3rd, Isabella Hibell, Jiggysaw 4th.

Show Hunter: Horse 80cm, Carolyn Hinton, Ludwig Van P 1st, Geraldine Wood, Duggan 2nd, Briar Langridge, Hartshill Blaze 3rd, Audrey Quin, Katie Did 4th.

Horse 80cm, Carolyn Hinton, Ludwig Van P 1st, Shah Bothwell, Siarash 2nd, Tania Smith, My Icon 3rd, Audrey Quin, Katie Did 4th.

Horse/Pony 60cm, Rider under 25yrs, Karis Spurway, Coppertone 1st, Ebony Collins, MistyleaSirion 2nd, Georgia Strachan, Westfalia Donna Maria 3rd.

Pony 70cm, Alexandra Hinton, Sir Callaghan 1st, Arni Spurway, Colour My World 2nd, Phillipa Grayling, TuisTennessee 3rd, Maddy Meier, Karendale Winter Show 4th.

Pony 70cm, Arni Spurway, Colour My World 1st, Phillipa Grayling, TuisTennessee 2nd, Brooke Stewart, Pendel Impressionist 3rd, Georgia Croton, Bullet 4th.

Pony 80cm, Stella Collins, Fluke the Duke 1st, Brett Morrison, Cyclone Fergie 2nd, Lara Williams, Gemstone Bequest 3rd, Ashley

Turner, Chesapeake Bay 4th. Pony 80cm, Stella Collins, Fluke the Duke 1st, Brett Morrison, Cyclone Fergie 2nd, Lara Williams, Gemstone Bequest 3rd, Lara Williams, Kaitake Spring 4th.

Pony Club Ring:

Rider 11yrs & under. Lead Rein. Brydee Hunt, Gypsy 1st, Thomas Logan, Rosie 2nd, Emily McDonald, Jack 3rd, Dylan Robinson, Brecon Bach Panadana 4th.

Rider 10yrs & under. Karis Spurway, Coppertone 1st, Jorja Sole, Drayton Flashdale 2nd, Ariana Dingle, Malika 3rd, Rebecca Schrader, Misty 4th.

Rider 11yrs & over. Ebony Collins, MistyleaSirion 1st, Georgia Croton, Bullet 2nd, Arni Spurway, Colour My World 3rd, Katelyn Schrader, Special Touch 4th.

Fault & Out Lead Rein Rider 11yrs & under. Thomas Logan, Rosie 1st, Brydee Hunt, Gypsy 2nd, Dylan Robinson, Brecon Bach Panadana 3rd, KedaSchimanski, Maleeka 4th.

Fault & Out 138cm & under. Jessica Munro, Symba 1st, Ruby Gatenby, Sharani 2nd, Jorja Sole, Drayton Flashdance 3rd, Ebony Collins, MistyleaSirion 4th.

Fault & Out over 138cm. Karis Spurway, Coppertone 1st, SaskiaButland, Rosa De Lil 2nd, Ariana Dingle, Malika 3rd, Rebecca Hadlow, Windsor Blue 4th.

Best Walking Pony, Lead Rein 11yrs & under. Dylan Robinson, Brecon Bach Panadana 1st, Emily McDonald, Jack 2nd, Ellie Sole, Happy 3rd, KedaSchimanski, Maleeka 4th.

Best Walking Pony 138cm & under. Hannah McLean, Dexter 1st, Jessica Munro, Symba 2nd, Dior Munro-Smith, Bite Me 3rd, Ruby Gatenby, Sharani 4th.

Best Walking Horse/Pony over 138cm. Arni Spurway, Colour My World 1st, Leann Clement, Ziggy 2nd, Lara Westraad, Tequila 3rd, Rebecca Spindler, Sadow 4th.

Best Pony Club Mount Lead Rein 11yrs & under. Dylan Robinson, Brecon Bach Panadana 1st, KedaSchimanski, Maleeka 2nd, Emily McDonald, Jack 3rd, Brydee Hunt, Gypsy 4th.

Best Pony Club Mount Rider 10yrs & under. Karis Spurway, Coppertone 1st, Simone Huthinson, Minniee 2nd, Ariana Dingle, Malika 3rd, Rebecca Schrader, Misty 4th.

Best Pony Club Mount Rider 11yrs & over. Jessica Munro, Symba 1st, Arni Spurway, Colour My World 2nd, Maeghan King, Magic Man 3rd, Leeann Clement, Ziggy 4th.

Judges Choice. Nardine Askew, Summer 1st, Chloe Thompson, Lady Cheyenne 2nd, Sean Laursen, Rivervale Malibu 3rd, Noah Laursen, Rivervale Savannah 4th.

Pony Flat:

Ponies up to & inc 148cm. Kate Logan, Jeess Louise 1st, Isabella Hibell, Jiggysaw 2nd, Georgia

Strachan, Westfalia Donna Maria 3rd, Maddy Meier, Karendale Winter Show 4th. Rider 13yrs & over. Kendell Simpson, Golden Sunset 1st, Phillipa Grayling, Tuis Tennessee 2nd, Lara Williams, Gemstone Bequest 3rd, Olivia Smith, Precious Gem 4th.

Novice Paced and Mannered. Phillipa Grayling, Tuis Tennessee 1st, Lara Williams, Gemstone Bequest 2nd, Jakartia Munro-Smith, Dragonwyck Bollinger 3rd, Ashleigh Clement, My Boy Danny 4th.

Open Paced & Mannered. Maddy Meier, Karendale Winter Show 1st, Alexandra Hinton, Sir Callaghan 2nd, Jakartia Munro-Smith, Dragonwyck Bollinger 3rd, Brooke Stewart, Pendel Impressionist 4th.

Open Paced & Mannered Hunter. Lara Williams, Gemstone Bequest 1st, Kendell Simpson, Golden Sunset 2nd, Isabella Hibell, Jiggysaw 3rd, Phillipa Grayling, Tuis Tennessee 4th.

Novice Pony. Cate Tulloch, Whistledown Annie Oakley 1st, Jakartia Munro-Smith, Dragonwyck Bollinger 2nd, Ashleigh Clement, My Boy Danny 3rd, Phillipa Grayling, Tuis Tennessee 4th.

Open Pony. Maddy Meier, Karendale Winter Show 1st, Alexandra Hinton, Sir Callaghan 2nd, Cate Tulloch, Whistledown Annie Oakley 3rd, Jakartia Munro-Smith, Dragonwyck Bollinger 4th.

Open Pony Hunter. Kendell Simpson, Golden Sunset 1st, Phillipa Grayling, Tuis Tennessee 2nd, Lara Williams, Gemstone Bequest 3rd, Olivia Smith, Precious Gem 4th.

Pony Club Mount. Jessie Howarth, Royal Senzation 1st, Megan George, Miss Independence 2nd, Brittany Simonson, Just Anything 3rd, Kayla Deane, Voulez Vous 4th.

Kendell Simpson, Golden Sunset. Champion, Maddy Meier, Karendale Winter Show Reserve.

Hack Flat: Rider under 21yrs. Stephanie Clement, Ashburn Elegance 1st, Lauren Stevens, Tuis Midnight Rhapsody 2nd, Ruth Singfield, Fred 3rd, Badinlee Munro-Smith, Goodwill 4th.

Hack Rider 21yrs & over. Susan Grayling, NRM Wairakau 1st, Carolyn Hinton, Ludwig Van P 2nd, Neta Burnside, Chance 3rd, Nicole McDonald, Prince of Toffs 4th.

Novice Paced & Mannered. Lauren Stevens, Tuis Midnight Rhapsody 1st, Audrey Quin, Katie Did 2nd, Emilie Husillos, Cisco Kid 3rd, Stephanie Clement, Ashburn Elegance 4th.

Paced & Mannered Hack. Lauren Stevens, Tuis Midnight Rhapsody 1st, Shah Bothwell, Siarash 2nd, Emilie Husillos, Cisco Kid 3rd, Nicole McDonald, Prince of Toffs 4th.

Paced & Mannered Hunter. Susan



Alex Moss had a great time at the Opunake Primary School Gala with Seonaid Pentelow and her pony Kahlua

Grayling, NRM Wairakau 1st, Stephanie Clement, Ashburn Elegance 2nd, Audrey Quin, Katie Did 3rd, Holly Watts, Asterix 4th.
Novice Horse. Lauren Stevens, Tuis Midnight Rhapsody 1st, Stephanie Clement, Ashburn Elegance 2nd, Carolyn Hinton, Ludwig Van P 3rd, Susan Grayling, NRM Wairakau 4th.
Open Hack. Nicole McDonald, Prince of Toffs 1st, Lauren Stevens, Tuis Midnight Rhapsody 2nd, Emilie Husillos, Cisco Kid 3rd, Shah Bothwell, Siarash 4th.
Open Hunter. Stephanie Clement, Ashburn Elegance 1st, Susan Grayling, NRM Wairakau 2nd, Audrey Quin, Katie Did 3rd, Kaysey Read, Glamourpuss 4th.
Judges Choice. Janelle Gavin, Delphie 1st, Emma Sandford, Nelly 2nd.
Nicole McDonald, Prince of Toffs Champion, Lauren Stevens, Tuis Midnight Rhapsody Reserve.
Games.
11yrs & under Lead Rein. Brydee Hunt, Gypsy 1st, KedaSchimanski, Maleeka 2nd, Ellie Sole, Happy 3rd.
10yrs & under. Rebecca Schrader, Misty 1st.
11yrs & under 25. Jakartia Munro-Smith, Dragonwyck

Opening Hours in December

Every Sunday in Dec:

- 11:00 - 3pm Saturdays:

9 - 3pm

Thursday 6th Dec:

- till 8:00 pm

Friday 21st:

- till - 8:00pm

Saturday 22nd:

- till - 5:00pm

Monday 24th:

- Late after parade

Pastimes

87 Tasman St, Opunake • Ph (06) 761-8151

LAWYERS

Thomson O'Neil & Co.

Our Opunake Office is attended by:

Robert England on **Wednesday** and **Fridays**, for buying and selling Houses, Farms and Businesses; Trusts; Wills and Estates.

Neal Harding on **Thursday**, for Residential Sales and Purchases; Family, District, and Criminal Court matters; Civil and Business matters.

FOR ALL YOUR LEGAL REQUIREMENTS

30 Tasman Street,
Opunake
Ph: 761-8823

Steven, Mike and Colleen would like to thank all our customers for their continued support this past year. We wish you and your families a blessed Christmas and a prosperous New Year.

Closed Xmas Day, Boxing Day, Dec 27 & 28 - re-opening Jan 2 2013

AGRIMEC AUTO LIMITED

38 IHAIA ROAD OPUNAKE

CALL US ON 06 761-8999

AVAILABLE OVER THE HOLIDAY BREAK ON 027 722 1191

LOST

BINOCULARS Bushnell at Opunake Lake area Ph 7617234 Reward.

TO LET

3 bdrm home, small, cosy, warm, sunny, garage, modern. Ihaia Rd. \$220 wk. Ph Tom 0220 915 319

FLATMATE WANTED

Female Flatmate Wanted. no kids or dogs. No bond Available now in Opunake \$110 p/w contact Grace 022 3056575

TRADES & SERVICES

FREEVIEW dishes and aerials. TV tune in or set up Freeview box. Phone Rob at Taranaki Aerial Services: 0800 284 396

Coastal Cleaning Services

If it needs cleaning - you need me.

20 yrs exp. Inside or outside. No job too big or too small. **Ph 027 237 8563**

LAWNS NEED MOWING? We mow lawns! Phone 0274 572 741 or A/H 06 764-8885.

PAINTING & PAPERING

Tradesman - FREE quotes **G & E Lindsay** Ph (06) 752 1113 or 027 651 0148

COASTAL STOPPERS. **GIB** Phone Glenn 027 524 5745.

PAINTER PAPERHANGER for all your interior decorating and any necessary insurance work Phone Bryan 0274658631

WORK WANTED

WORK WANTED I am looking for full or part time work. I have loads of skills in teacher aiding, child minding, housework and gardening. Anything considered. Contact Michelle Holmes after 1:30 in the afternoon at 761 8431.

FOR SALE

TOP SOIL - Screened quality soil. \$45 for a tractor bucket load. Two loads fill a 6 by 4 trailer. For delivery in Opunake add \$10 per bucket load. New Life Nursery Ph. 7618067

STRENGTHEN YOUR tanker track and extend its life. Cement stabilisation now available in Taranaki from Field Transport. Ph Rodney (027) 443 3200 or (06) 757 5225

SILAGE/BALEAGE, excellent quality \$100 +gst delivered. Ph Rodney (027) 443 3200

FOR SALE

A TOTAL BODY SUPPORT for seasonal allergies or sinus infections acute or chronic, addresses the 3 body systems involved in sinus and bronchial health. Get onto it before the allergy season. Non drowsy formula. At Hardy's the health shop in Centre City 7587553

BACK PAIN CONTROL an effective combination of herbs and nutrients specifically designed for the symptomatic relief and management of lower back pain. At Hardy's the health shop in Centre City 7587553. We deliver.

D-RIBOSE as seen on TV Is Modern medicine killing us. Ribose Powder restores the basic energy of your body and maintains its full charge during the day. Ribose is produced in the body, naturally, although this process is very slow. D-ribose powder can quickly restore and maintain your depleted energy reserves and, as a consequence, the daily consumption of this additional powder reduces muscle stiffness, soreness and fatigue. As one of the most popular supplements among endurance athletes, ribose helps athletic performance, supplying the cells of muscle tissue with a continuous supply of adenosine triphosphate (ATP), which is known as cellular energy. Ribose is natural sugar, which can be found in all living cells. Available at Hardy's the health shop in Centre City 067587553 we deliver.

LAWNMOWERS SECONDHAND

Pushmowers and ride-on mowers. All workshop serviced. Available at Collins Sports Centre, Opunake

NEW STOCK MGP SCOOTERS arriving daily, parts now in stock. Available at Collins Sports Centre. Opunake

MAGNESIUM is by far the most important element needed in our bodies, activating over 350 different chemical reactions all necessary for the body to function properly. Symptoms of magnesium deficiency: cramps, muscle twitches, agitation, anxiety, restless sleep, headaches, tiredness to name just a few. Available at Hardy's the health shop in Centre City 067587553. We deliver.

GARDEN MULCH- Ideal to help retain moisture over the summer months and to suppress weeds. \$20 for a tractor bucket load. Two loads fill a 6 by 4 trailer. For delivery in Opunake add \$10 per bucket load. New life Nursery Ph 7618067

SWAN PLANTS for sale \$4 pH: 0278 798829

ANNUAL FLOWER punnets now 4 for \$11 New Life Nursery 183 Tasman Street Opunake Phone 761 8067

PUBLIC NOTICES

Coastal Emergency Transport Group

If you need a ride to a hospital for a medical appointment or specialist in Taranaki but don't have any way of getting there please ring our facilitator, Debbie Campbell, to book a driver. Phone 06 761 8192.

This service is funded by the Taranaki District Health Board. Prior notice for non-urgent appointments would be great if possible thanks. A small contribution of \$10 is optional.

Progress Opunake

- small town, big ambition

www.opunakenz is the Opunake Business Association's website. We promote Opunake and Business Association members businesses.

To advertise on this website or place an upcoming event, contact Debbie Campbell 06 761 8192 or email: northmeetswest@extra.co.nz. Non profit organisations can place their contact details for free in the directory. Businesses pay an annual fee of \$120 which entitles them to have their business listed.

For larger advertising check out the advertise page on the website or contact Debbie.



MR AND MRS COASTAL DAIRYFARMER

LEASE DAIRYFARM WANTED

Are you wanting to slow down while retaining your assets in land and dairy shares?

The Coastal Rugby Club has run a lease dairy farm operation for the past 16 years, due to family returning to the farm, is considering its options for 2013 and beyond.

The club has a JX freehold dairy herd of 230 cows achieving excellent production figures (86000 m/solids last season).

Our present operation is overseen by a farm consultant and a highly motivated farm committee. If you are considering your position and options for next season, we would like to talk with you.

INQUIRIES IN CONFIDENCE TO

- Daryl Hickey - PH: 06 761 7147**
- Ray Barron - PH: 06 752 8073**
- Dan Morgan - PH: 06 763 8424**

THANK YOU

The Opunake and District Foodbank would like to thank the community, schools and churches for their wonderful donations of food, meat and cash that have been so generously given.

The committee is very grateful and without these we would be struggling to have these emergency provisions.

As from January 2013 the Foodbank will only be open on Tuesdays and Wednesdays from 10:00 am until 2:30 pm.

We wish everyone a very merry Christmas and best wishes for 2013

The committee

OPUNAKE AND DISTRICT FOODBANK

Advertising - it works!
Phone: 06 761 7016

Raffle Results Christmas Market Christmas Cake - Andrea Gillum Gift Basket - Rebecca Gibson
Thank you for your support - R.C.Drummond

CHURCH NOTICES

Opunake & Okato Co-operating Parish CHURCH SERVICES

St Paul's Opunake Co-op & Rahoitu Opunake Cooperating Parish St Pauls, Havelock St, 9.30am every Sunday and the **Rahoitu** - Wesley - 11am first Sunday of the month. **Oakura** - St James - 10am, 2nd & 4th Sundays. **Okato** - St Pauls - 10am, 1st & 3rd Sundays.

Opunake Catholic Church

SUNDAY 8.30 am at Pungarehu (St Martins), 10am at Opunake (Our Lady Star Of The Sea).

Other areas

Manaia - Sacred Heart - 1st & 3rd Saturdays at 5pm (2nd, 4th and 5th Sat at Hawera's St Josephs). Kapinga - St Patricks, Sunday 8.45am

ALL WELCOME

Opunake Co-operating Parish Christmas Nativity Display at Havelock Street, Opunake.

16th to 24th December

Hours: 1:00pm to 4:00pm
7:00pm to 9:00pm

Thereafter by appointment.

Group visits by arrangement.

Contacts: Kathy Stanley 06 7618592;

Macey Luttrell 06 7618927

Opunake Combined Churches.

16th Dec: COMMUNITY CAROL SERVICE ST PAULS CHURCH 7PM - CUP OF TEA TO FOLLOW.

24th Dec: ST BARNABAS CHRISTMAS EVE SERVICE - 9:30PM

24th Dec: OUR LADY OF THE STAR - CATHOLIC MASS 9PM VIGIL, PRECEDED BY CAROLS AT 8.30PM

25th Dec: CHRISTMAS DAY SERVICE 9:30AM

25th Dec: CHRISTMAS DAY MASS AT

PUNGAREHU CATHOLIC CHURCH

30th Dec: 10AM COMBINED SERVICE OUR LADY STAR OF THE SEA

6th Jan: 10AM ST PAULS CHURCH

13th: JAN 10AM THE WAVE

20th: JAN 10AM ST BARNABAS

27th: JAN 10AM OUR LADY STAR OF THE SEA

PUBLIC NOTICES

Opunake Business Association

NEXT MEETING

Monday February 4th at Opunake Surf Inn

5:30 Social, 6.00 pm Meeting

We welcome any member of the community to our meetings, you don't have to have a business.

Subscriptions of the Opunake & Coastal News are available to those who live outside the area and wish to keep in touch. Our office is at 23 Napier Street, Opunake.

WHAT'S ON

DECEMBER

- 15 **LOCAL HANDCRAFTS INC**
Saturday Dec 15 at 9.30am – 3.30pm. (Refer advert).
- 16 **COMMUNITY CAROL SERVICE**
Sunday Dec 16 at 7pm St Paul's Church Opunake. (Refer advert).
- 16 **CHRISTMAS AT THE TSB BOWL OF BROOKLANDS**
Sunday Dec 16. Gates open 5pm, entertainment from 7pm. (Refer advert).
- 16 **DAIRY WOMAN OF THE YEAR**
Sunday Dec 16 nominations close.
- 16-24 **OPUNAKE COOPERATING CHURCH CHRISTMAS NATIVITY**
Sunday Dec 16 – Monday Dec 24. (Refer advert)
- 17 **COASTAL TARANAKI HEALTH TRUST AGM**
Monday Dec 17 at 7.30pm. (Refer advert)
- 18-21 **FREE SOUTHLINK BUS SERVICE**
Refer advert
- 19 **GLASS ART FROM AROUND NEW ZEALAND**
Wednesday Dec 19 – January 25 at Percy Thomson Gallery, Stratford
- 20 **TARANAKI COUNTRY MUSIC HALL OF FAME**
Thursday 20 Dec. Christmas night starting at 7.30pm (refer back page story).
- 22 **MANAIA & DISTRICTS LIONS CLUB SANTA PARADE & GALA**
Saturday December 22. Market from noon, Parade from 1pm. (Refer advert).



One of the scenes set up for Christmas at the Opunake co-operating church

PTO Gallery Eltham presents Plus One

Plus One is an exhibition of selected artists and a guest artist of their choosing, their "plus one". A fantastic blend of artists using an array of various mediums and methods bring a variety of new work. Artists are Maree Horner, Catherine Macdon-

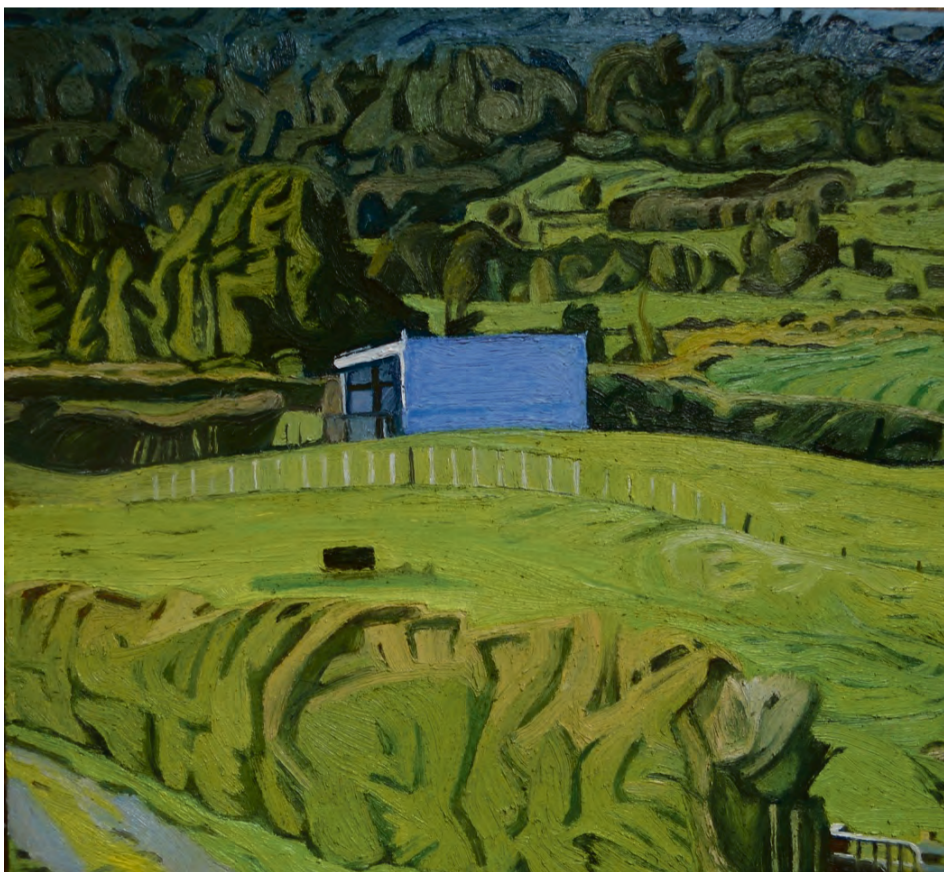
ald, Frances Stahl, Louise Rive, Marianne Muggerridge, Katey Pittwood, Katie Baylis, Anna Korver, Michaela Stoneman, Beck White, Angela McAlpine and Catherine Tamou. Mediums include glass, painting, assemblages, sculpture &

ceramics. of continuing until Sunday the 23rd December, Plus one is of an opportunity to see new work by leading artists and promises to be an exhibition not to be missed. Or ring PTO Gallery for an appointment

Opunake Service Station
Paul and Christine and Staff wish to thank the Opunake Community for their support and look forward to again providing excellent services in 2013

MERRY CHRISTMAS TO ALL

Ph (06) 761 6001
Tasman street Opunake



The Blue Shed oil on board 2012 Marianne Muggerridge



Table port street-Catherine Macdonald 2012 exhibit at the PTO Gallery

Final last words

A husband read an article to his wife about how many words women use a day... 30,000 to a man's 15,000. The wife replied, 'The reason has to be because we have to repeat everything to men... The husband then turned to his wife and asked, 'What?'

WIFE VS. HUSBAND
A couple drove down a country road for several miles, not saying a word. An earlier discussion had led to an argument and neither of them wanted to concede their position. As they passed a barnyard of mules, goats, and pigs, the husband asked sarcastically, 'Relatives of yours?' 'Yep,' the wife replied, 'in-laws.'

A government that robs Peter to pay Paul can always depend on the support of Paul.
George Bernard Shaw

Full Replacements
Conservatories
Inserts

We wish our loyal customers the very best for Christmas and the New Year! We are closed from 21st December until January 11th 2013 when we re-open.

WAYNE JONES
(06) 278 8991
e: jones.fairview@xtra.co.nz
w: www.fairviewhawera.co.nz
159 Princes Street, Hawera

FAIRVIEW
WINDOWS & DOORS HAWERA

Christmas at The Bowl



Hundreds of people enjoy the lights and the atmosphere at The Bowl last year.

TSB Bowl of Brooklands, Sunday December 16 is the place to be next weekend.

Christmas in Taranaki is renowned for "Christmas at The Bowl" on Sunday December 16. This family orientated event has been showcasing the best in the region's talent in the beautiful Brooklands Bowl since 1999 and is assured to be another great night out. This is the biggest variety show of the year run "by the community - for the community" and concludes with the Christmas at The Bowl Fireworks Spectacular, along with the opening night of the nationally acclaimed TSB Bank Festival of Lights.

Gates open at 5.00pm to

this iconic venue so take along the family and your picnic dinner to really enjoy the atmosphere of the event. Pre-show entertainment commences at 7.00pm with 'Niteshift' followed at 8pm by 'It's Beginning To Look A Lot Like Christmas' - including Santa himself and a host of Taranaki entertainers sure to delight. There is something for everyone during the show and 2012 will be a true variety of individuals and groups. From an incredible bass singer, kids choir, hip hop and burlesque dance numbers, outstanding singers and Santa himself - it will be a show to remember. This year, along with the big screen Jordan McFadyen of Classic Hits has also arranged for all carol

words to be available on the Facebook page just in time to join in the singing of the Christmas carols from NP Brass and Mostly Martha. Entry is by gold coin donation with candles & holders provided at the venue and as a special treat there is a 3 day Womad double pass to give-away so keep your specially numbered candle holder and programme then tune into Classic Hits the morning after the show. This is definitely a night to mark in your diary now and something that everyone can afford to do with their fam-

ily to celebrate the festive season.

Postponement night is Monday 17th December in the event of bad weather - see www.christmasatthebowl.co.nz, become a friend on Facebook at Christmas At The Bowl - Taranaki for regular updates or text BOWL to 4487 for weather updates on the day. Sponsors are an integral part of ensuring Christmas At The Bowl remains a local favourite with the community. All involved are appreciative of their continued support and encouragement.



Reflections

Counselling Services, 89 Regan St, Stratford
Tuesday & Wednesday by appointment
Ph 06 765 8280 Faith Smith MNZAC
Diploma in Counselling WelTec

Closed

4pm on Wed 19 Dec 2012.

Reopening

Tues 15 Jan 2013 9:30am

Seasons Greetings



Honey, our lawyer wishes us, but in no way guarantees, a Merry Christmas.



06 274 8506
33 SOUTH ROAD, MANAIA

Merry Christmas & thank you to all my Customers

Open Xmas Eve 4pm to 7.30pm
Closed Xmas and Boxing Day
Re-opening 27th Dec

Wishing you all a Merry Christmas.
Look forward to you visiting Dawson Falls Cafe over the festive period.

Upper Manaia Road,
 On The Mountain

Dawson Falls
 MOUNTAIN LODGE
 Ph (06) 765 5457



Opunake Co-operating Parish
Present their 2012

Christmas Nativity Display

at Havelock Street, Opunake.

The church will be open for viewing from
16th to 24th December

Hours: Daytime: **1:00pm to 4:00pm**
Evening: **7:00pm to 9:00pm**

Thereafter by appointment.
Group visits by arrangement.

Contacts: Kathy Stanley 06 7618592; Macey Luttrell 06 7618927

Oh come all ye to Opunake



Two of the kings travelling by foot and camel (From the 2011 display).

The Opunake Cooperating Church on Havelock Street is gearing up for their Christmas Nativity display this year. A new 'town of Bethlehem'

is being created with the focal point being the stable with Joseph, Mary and baby Jesus. Angels will be flying overhead, shepherds, sheep, kings and camels will add to

the Christmas story, while the angels' room will have a new theme.

Elva's elves are busy at work most evenings, and the display will be ready for

viewing from December 16-24, from 1-4pm, and 7-9pm.

For viewing outside these days and hours people can contact Macey (06) 7618927 or Kathy (06)761 8592

We are closing 3pm
Friday 21st Dec.
Re-opening (normal hours)
7th Jan 2013
Annette and the girls would like to wish their valued customers a very merry Christmas and a Happy New Year.

Rhubarb

Local Handcrafts Inc

Next event is on December 15th
9.30am - 3.30pm
at St Mary's Hall, 36 Vivian Street
New Plymouth
Phone: Topsy Lynch (06) 758 6112
for further information

For all
your advertising
requirements phone
(06) 761 7016

Seeking the next Peter Jackson

World Vision and its micro-finance arm VisionFund, are calling on Kiwi film-makers to enter a global competition for the chance to win a once-in-a-lifetime experience.

The MicroFlicks contest will send five outstanding filmmakers to different locations in Africa, Asia, and Latin America. The aim of the competition is to produce films that illuminate micro-finance and inspire millions.

All five finalists will compete head-to-head in a global online competition that will crown one film the 'Micro-finance Film of 2013' in June 2013. "This is an exciting

opportunity for filmmakers, but it's also a great way to for us to shine a light on microfinance and how it lifts people out of poverty," says David Knights, Global Director of Marketing & Fundraising for VisionFund International.

To compete for exposure, awards, and prizes, VisionFund encourages all filmmakers to visit <http://www.MicroFlicks.org> and send in an example of their best work by December 31, 2012. There is no cost to apply, and all filmmakers around the world are encouraged to enter. If you are

a passionate filmmaker who is interested in being sent to an exciting location to create a film that could impact millions and change your own life, apply today.

About VisionFund & World Vision

VisionFund improves the lives of children in the developing world by offering small loans and other financial services to families living in poverty. Our work empowers our clients to grow successful businesses which enable children to grow up with improved health and education.

Our network of microfi-

nance institutes spans 35 countries in Asia, Africa, Latin America and the Caribbean, and the Middle East and Eastern Europe. Working in partnership with World Vision, a relief, development and advocacy organisation, we are committed to long-term change, which will unlock potential for future generations.

For more information please contact Lindsey.Talerico-Hedren@worldvision.co.nz on 021 929 398



Annual Opunake Christmas Parade

Monday 24th December
Participants assemble at the
Opunake lake @ 7pm
Parade Starts 7.30 pm.
Come & join in the fun.

Great prizes.
Ad kindly sponsored by AGRIMEC

Early Christmas treat for bus users

People in South Taranaki and Inglewood can ride for free on Taranaki Regional Council once-a-week bus services next week (December 18-21). The promotion applies to SouthLink services connecting Hawera with Waverley, Patea, Manaia

and Opunake, and the weekly Opunake-New Plymouth and Inglewood-New Plymouth services.

Booked passengers will have priority over casual users, so pre-booking is essential.

VINTAGE MASH

Vintage Clothing, Costume Hire, Books, Art, Brat Hats For Kids, Gifts, Retro Menswear And Hats, New Kids Clothes, Collectable Tins, Incense, Accessories, JEWELLERY, DECOR, VINTAGE WORKSHOPS, Vintage Craft & Stamping Supplies.
OPEN WED - SAT 10 - 4 Next to Lahar OKATO
Late nights Fri 14th & Sat 22nd Dec, gift wrapping, bubbles, nibbles, discount jar and specials!!
Like us VINTAGEMASHFASHION on FBOOK
Buy online at www.BratHats.com

For
advertising
phone
(06)
761 7016

Free delivery in Opunake.

Sunscreen 20% off.

Xmas gifts Free wrapping

Self tanning products.

Sunglasses 30% off

Passport photographs available.

Ear piercing available.

Closed Xmas Day and New Years Day.
Open Boxing Day & 2nd Jan 10am - 2pm Re-opening on 3rd Jan.

55 Tasman St. Opunake
Opening Hours
Mon-Fri: 8:30am - 5:30pm
Sat: 10:00am-2:00pm
Phone: 06 761 8599

WHAT'S ON AT THE GALLERY

BLOWN AWAY WITH GLASS

GLASS ART FROM AROUND NEW ZEALAND WITH ARTWORK FROM TARANAKI

DECEMBER 19 – JANUARY 25

PLUS **SUNRISE SUNSET**

IN THE ACCOUNTANTS ON BROADWAY GALLERY

PERCY THOMSON GALLERY
MIRANDA STREET, STRATFORD T: 06 765 0917
PERCYTHOMSONGALLERY.ORG.NZ

PERCY THOMSON GALLERY

Evening of country music and Christmas songs



Helen Braithwaite and a friend at the Taranaki Country Music Hall of Fame

The place to be on Thursday December 20 is the Taranaki Country Music Hall of Fame in Manaia with a Christmas night – starting at 7.30pm.

Hosts Ian and Helen Braithwaite promise a great evening where you can either listen to talented acts such as Daphne Stratford and

Russell Sutherland with his harmonica, or have a go yourself. “Anybody can get up and sing”, explains Helen.

Entry is just \$3 for adults with children just half price. There is wheelchair access to the venue.

Apart from the usual country music memorabilia the premises will be decorated to highlight Christmas cheer including a model of the man himself – Father Christmas.

Helen says she hopes that people feel free to dress up for the occasion. She recalls a previous event when someone came dressed as Rudolph the Reindeer, which was really eye-catching and funny.

The aim of the event is, “Just to have a fun night for everybody”, says Helen. For more information you can phone Helen and Ian on 06 274 8442.

Taranaki Country Music Hall of Fame

Xmas Night on December 20

(starting 7:30pm)

Everyone welcome - Singers or Listeners.

Ladies a plate please

\$3 Adults and Children half price

phone: (06) 274 8442

Help needed to solve mystery of missing books

Moriarty has stolen the best library books to read this summer but Sherlock, Watson and Mycroft are on the trail! Help them track Moriarty down by joining in this year's South Taranaki Libraries Summer Reading Programme.

The programme, now in its

10th year, is offered free to all South Taranaki children aged 5-12 years during the Summer School Holiday period. Registrations open on December 5, but spaces are limited so you need to register early.

The theme of the programme is The Great Book Mystery. Te Pirikoko Whakarahara o te Pukapuka and South Taranaki joins libraries across New Zealand in solving the mystery of what to read this summer.

South Taranaki District Children's Librarian, Pam Jones says the goal of the programme is to encourage young people to keep read-

ing over the long summer holiday break.

“Statistics shows that children who continue to read during the summer holiday period are more likely to remain at the same reading level as when they finished school in December and in many cases to have even gone up a level,” says Pam. “The programme also aims to involve caregivers in their children's reading at home, and to develop a positive relationship between children, libraries and library staff,” she says.

During the programme each child will 'report-in' to a library staff member three

times throughout the summer.

“A special area has been created in the libraries for the 'report-in' so customers should not be surprised to find that instead of walking into a library they appear to have entered a detective agency,” says Pam.

Activities throughout January will include spy games and code breaking, as well as a number of mysterious events. So don't get caught without a good book this summer - hunt out that spy glass and invisible ink and join the other great detectives at your local Library-Plus.

CHRISTMAS at the Bowl

TSB Community Trust

POWERCO

CLASSIC HITS 80, 90, TODAY 90.0

NZCT NZ COMMUNITY TRUST

TSB Bank FESTIVAL OF LIGHTS

AWE

TSB Bowl of Brooklands Sunday 16th Dec 2012

Pre-Show Entertainment from 7pm
Main Show 8pm



For more info see www.christmasatthebowl.co.nz



Manaia & District Lions Club Christmas Parade & Gala



Saturday 22 December 2012



MARKET DAY - 12.00 pm

Registration required for stalls - All stall sites are **FREE!!**

Food Entertainment
Coffee Carts Crafts

Contact Jenelle Robinson (06) 274 8424 or 027 447 1870 for more information

CHRISTMAS PARADE - 1.00 pm

Floats are also invited to join - Four cash prizes!!

1st \$200.00 2nd \$150.00
3rd \$125.00 4th \$100.00

Contact Gordon Chisnall (06) 274 8287 or David Lloyd (06) 274 8752 for more information

